

# RIVERLAND





The family-owned and run Mallee Estate, showcases estate-grown and made wines.

Stop in for a tasting or a guided winery tour hosted by passionate second-generation winemaker, Jim Markeas. Stay for lunch or dinner at the onsite restaurant Eleni's, and indulge in the best authentic Greek cuisine, made lovingly from Eleni's family recipes passed down from generation to generation.

Riverland Winery of the Year – New York International Wine Competition five years consecutively

20055 Renmark Avenue, Renmark  
08 8595 1099 ♦ [elenis@malleeestate.com.au](mailto:elenis@malleeestate.com.au)  
[malleeestate.com.au/restaurant](http://malleeestate.com.au/restaurant)



# STAY.DRINK.RELAX.PLAY WELCOME TO WILKADENE



STAY AT WILKADENE COTTAGE



DRINK AT THE WOOLSHED BREWERY



PLAY IN THE INTERACTIVE NATURE PLAYGROUND

RELAX ON THE BANKS OF THE MURRAY



## WILKADENE.COM.AU

WILKINSON ROAD, MURTHO VIA RENMARK

ACCESSIBLE BY ROAD OR RIVER

OPEN WEDNESDAY TO SUNDAY 11AM - 5PM

@WOOLSHEDBREWERY @WOOLSHEDBREWERY



# Travel. Our Way.

## ADELAIDE & SUBURBS

Adelaide 08 8203 7611  
Port Adelaide 08 8405 6560

## ADELAIDE HILLS

Adelaide Hills - Hahndorf 08 8393 7600

## BAROSSA

Barossa - Tanunda 08 8563 8334  
Gawler 08 8522 9260  
Kapunda 08 8566 2902

## CLARE VALLEY

Burra & Goyder - Burra 08 8892 2154  
Clare Valley - Clare 08 8842 2131

## EYRE PENINSULA

Elliston 08 8687 9200  
Port Lincoln 08 8621 2360  
Whyalla 08 8645 7900

## FLEURIEU PENINSULA

Fleurieu Coast - Yankalilla 08 8558 0240  
Goolwa 08 8555 7248  
McLaren Vale & Fleurieu - McLaren Vale 08 8323 9944  
Strathalbyn 1300 466 592  
Victor Harbor 08 8551 0777

## FLINDERS RANGES & OUTBACK

Coober Pedy 08 8672 4617  
Flinders Ranges - Quorn 08 8620 0510  
Hawker 08 8648 4022  
Peterborough 08 8651 3355  
Port Augusta - Wadlata 08 8641 9194  
Port Pirie 08 8633 8700  
Roxby Downs 08 8671 5941  
Wilpena Pound 08 8648 0048

## KANGAROO ISLAND

Penneshaw 0417 551 444

## LIMESTONE COAST

Bordertown 08 8752 1044  
Mount Gambier 08 8724 9750  
Naracoorte 08 8762 1399  
Penola/Coonawarra - Penola 08 8737 2855  
Robe 08 8768 2465

## MURRAY RIVER, LAKES & COORONG

Mannum 08 8569 1303  
Murray Bridge 08 8539 1142

## RIVERLAND

Barmera 08 8588 2289  
Berri 08 8582 5511  
Loxton 08 8584 8071  
Renmark Paringa - Renmark 08 8580 3060  
Waikerie District - Waikerie 08 8541 0720

## YORKE PENINSULA

Ardrossan 08 8837 4195  
Copper Coast - Kadina 08 8821 2333



**DOWNLOAD OUR SIX  
ROAD TRIP MAPS HERE**

[SOUTHAUSTRALIA.COM/ROADTRIPS](http://SOUTHAUSTRALIA.COM/ROADTRIPS)



**SCAN THIS CODE FOR SA VISITOR  
INFORMATION CENTRE LOCATIONS**

## CONTENTS

- 4 Welcome
- 6 Experience the Riverland
- 8 Explore
- 14 The Murray
- 24 Eat & Drink
- 40 Maps
- 46 Stay
- 60 History & Culture
- 63 Towns
- 72 Our Neighbours
- 74 Events
- 75 Top Travel Tips
- 76 Advertiser Directory

### Acknowledgement of Country

The Riverland Tourism Industry acknowledges that the First Peoples of the Murray River and Mallee are the Traditional Owners. We acknowledge the seven tribes of the Riverland and Mallee, under the Meru language group of our region. We pay our respects to their Elders past and present and extend that respect to other Aboriginal and Torres Strait Islander people who live in and visit this beautiful region.

[visitriverland.com.au](http://visitriverland.com.au)

/RiverlandSouthAustralia

@riverlandsouthaustralia

#visitriverland

#riverlandsa

Cover Image: Isaac Forman

The official Riverland Visitor Guide  
proudly produced by



## THE RIVERLAND IS...

Drinking coffee at dawn on the deck of your houseboat. It's warm wetsuits hung over a rail and the kids' eagerness for the wakeboarding to begin.

It's exploring a historic river town, where the community's love for the Murray survives everything. It's indulging in the produce of local graziers, growers and grape-lovers – sitting at a waterside bar with a sundowner.

It's planning your tomorrows in an ancient landscape. Will it be canoeing silent backwaters? Casting a lazy line beneath a river red gum? Sitting around a crackling fire with starlight reflected on still lagoons?

It's charting a course for horizons filled with memories.



**LET THE GOOD TIMES FLOW**

# EXPERIENCE



## Get on board!

Waterskis, wakeboards, kayaks, jetskis, stand up paddleboards... The Riverland is THE destination for anyone with a love of watersports. All the ingredients are here: calm waters under sunny skies; oodles of boat access; and a swag of *après* ski thanks to riverside restaurants and bars. Like it fast? The extra-wide river accommodates everyone! New to skiing or wakeboarding? Head to the calm waters of Lake Bonney. Need a local hire? Not a problem.



Riverfun Houseboats, Paringa



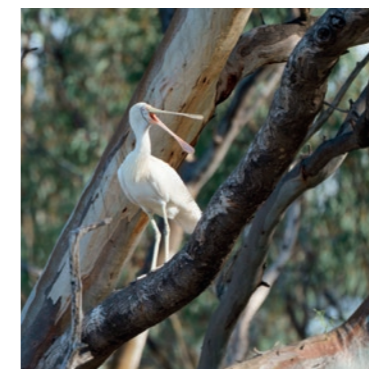
Mallee Estate Wines, Renmark

## In your wheelhouse

'Houseboating' is Australian for 'river cruising' – a true-blue expression of freedom, frolics and going with the flow on our greatest river. Modern houseboats are never less than comfortable, ranging from a romantic love-nest for two to a floating multi-room palace with all mod-cons. They're easy to drive (yes, you 'drive' a houseboat, which is why you only need a driver's licence to hire one) and can easily accommodate a family of four up to a floating party of 12.

## Make it fun, fresh and fabulous!

We're still known for our bonza pub grub but the Riverland eating scene has come a long way! Do the locavore thing at Earth Restaurant in Berri, serving dishes like Murray cod cake, with black truffle, roasted leek aioli and samphire, paired with local wine. Eleni's Greek restaurant at Mallee Estate Wines salutes the region's long-standing settler heritage. And at the Hotel Renmark's new restaurant, 'Temperance', you'll find eight-course paired degustations with a farm-to-plate focus!



Murray River Trails, Renmark



Riverland Wine Centre, Lyrup

## Disappear into another world

The 'backwaters' are the river's secret places – the mystical, ancient spaces, enclosed by trees and ringing with birdlife, where dark, mirror-still waters reflect the sky. Enter the backwaters on a kayaking tour with a Riverlander and you'll discover a part of the planet you didn't even know existed.

## Discover tomorrow's wines today

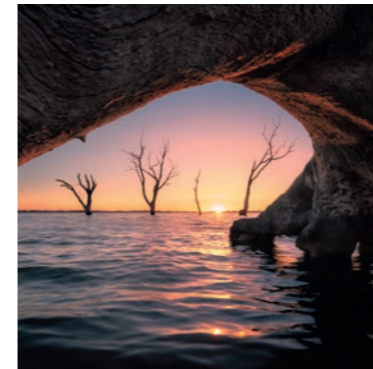
The Riverland is Australia's largest and most sustainable wine-producing region – it's also home to 85 different wine grape varieties with more than 30 emerging varieties. Delicious wines like Fiano, Montepulciano and Nero d'Avola flourish in the local terroir; much like the growers themselves, you'll find these varieties interesting, lively and ahead of the curve.

# EXPLORE

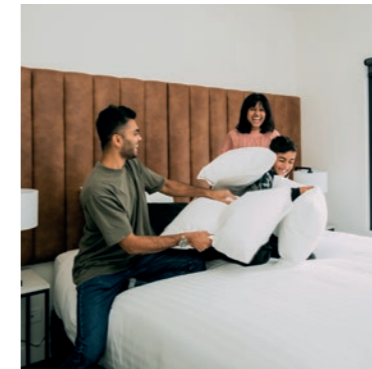
ONE AMAZING REGION,  
SEVEN AWESOME DAYS!



Rivergum Cruises, Waikerie



Lake Bonney, Barmera



Berri Hotel, Berri



23rd Street Distillery, Renmark

The Riverland is just two hours' drive from Adelaide and makes for the perfect holiday destination. It's beautiful, diverse and welcoming; it's also easily seen, measuring only 150 kilometres from east to west and with little more than 40 minutes' drive separating most towns and attractions.

This sample seven-day driving itinerary shows you just how much is on offer...

## Day 1

Start the day in **Morgan**, a charming town that enjoys broad river frontage on a substantial bend. It was once the busiest inland port in Australia. Relive the town's history at the original Station Master's House (now the Visitor Information Office), the Landseer Building (housing the museum) and the Heritage-listed 12-metre-high Morgan Wharf. A fab playground with a play-sized paddle steamer (the PS *Morgan*) makes a great stop if you have kids.

Head to **Waikerie**, home to lavish birdlife (including the huge Regent Parrot painted on the town's silos) as well as one of the largest fruit-processing operations in the Southern Hemisphere. Join a two-hour evening river cruise with Rivergum Cruises to find out more about the local ecology and history, with a glass of wine and local grazing platter served on board. Overnight Waikerie.

## Day 2

Start the day with a pre-breakfast walk from Waikerie town centre along the cliff-top, following in the steps of the region's pioneers courtesy of a signed trail; you'll be rewarded with magnificent riverscapes and a healthy appetite, which can be easily satisfied at the fabulous Illalangi providore or the Waikerie Bakery.

Drive 50 kilometres to Barmera, stopping at Banrock Station where you can explore the famous winery and wetlands. You can also detour to the Overland Corner Hotel, a must-visit historic pub.

**Barmera** is on the shores of **Lake Bonney**, a substantial lake offering safe swimming beaches and plenty of space for on-water recreation. The Pioneer Museum is located in an old fire station; and the Loveday Internment Collection is dedicated to WWII internees – an unusual historical insight. Watching a sunset over the lake is a must, as is a drink at the lakeside Barmera Club. Overnight Barmera.

## Day 3

On the way to **Berri**, you'll find prime wine-growing country, home to boutique wineries such as Bassham, Top Block and 919. Berri enjoys

a lovely stretch of riverfront and is home to the popular Berri Hotel, River Jack's Café and Canoe Adventures Riverland. It has a wetland walking trail and is the gateway to the stunning Murray River National Park (Katarapko). The town of **Loxton** offers a great range of shops, a huge pioneer playground and the famous Loxton Historical Village. The village features 45 reclaimed 1900s buildings; on 'Alive Days', volunteers quite literally bring the past to life.

Overnight Berri or Loxton.

## Day 4

With a population of 5000, **Renmark** is the largest town in the region and offers distractions galore. It also has one of the best public river frontages along the Murray and is the perfect place to hire a houseboat.

Be sure to experience the National Trust Olivewood Historic Homestead (home of Riverland pioneer, Charles Chaffey), the PS *Industry* (a working 1910 paddle steamer), and the distilleries at 23rd Street, Rustons and Angove Family Winemakers (owners of St Agnes). The surrounding land is home to wineries (including Mallee Estate) as well as plenty of farmers growing fruit, vegetables and nuts. Nearby **Murtho** is home to Canoe the Riverland (for wilderness canoe tours) and the Wilkadene Woolshed Brewery. Don't miss an excursion to Headings Cliff Lookout for one of the best views in the Riverland.

Overnight Renmark.

## Day 5–7

Hire a houseboat, don your skipper's hat and make like a river captain! If you'd prefer someone else to do the skippering, try Murray River Trails for a guided multi-day walking and houseboating experience.



Scan the QR code  
to check out more  
great itineraries



Renmark River Cruises, Renmark

# BASE YOUR STAY IN THE HEART OF THE RIVERLAND



Talk to one of our friendly locals to make the most of your total Riverland experience.

**Berri Barmera**  
COUNCIL

Building a better community



24 Riverview Drive, Berri  
08 8582 5511  
visitberribarmera.com.au



**MURRAY MARINE CENTRE**

THE RIVERLAND'S LEADING LOCAL, FAMILY-OWNED AND RUN, MARINE AND OUTDOOR CENTRE

We specialise in all things Yamaha outboards, Stacer boats and Husqvarna outdoor power products. We carry a wide range of stock, spare parts, and accessories.

Our factory-trained, qualified technicians have all your boating and outdoor power product technical needs covered.

253 Renmark Ave, Renmark  
(08) 8586 6884  
admin@murraymarine.com.au  
murraymarine.com.au



**.CRUISE.  
THE  
MURRAY**

CABINS SELLING FAST · BOOK NOW

3 NIGHTS FROM \$1,199PP\*

It's watching the world go by, it's the connections you make, it's the good old-fashioned hospitality. Step aboard the majestic Murray Princess. BOOK YOUR 3, 4 OR 7 NIGHT CRUISE TODAY.



MURRAY PRINCESS

1300 729 938 · MURRAYPRINCESS.COM.AU

## BISTRO BRILLIANCE

Acknowledged as one of the best places to dine in the Riverland, serving pub favourites, modern Australian cuisine, with a seven-day café and brilliant al fresco areas. The Riverland climate is made for outdoor dining, so is the award-winning **Loxton Hotel**.

See advertisement page 35

## FAMILY GETAWAY

Enjoy a peaceful stay at the **Waikerie Hotel Motel** when passing through the Riverland region. Unwind in a 4.5-star king hotel room or book a spacious family room off-site but close to local shops and attractions.

See advertisement page 57



## Berri Newsagency

Berri Newsagency is conveniently located in the heart of town — opposite Woolworths and next to ANZ. Stocking the Riverland's largest range of magazines and cards. You'll also be surprised by their extensive collection of giftware, including Frank Green products, handbags, wallets, Melba's confectionery and diaries. Keep the kids entertained with books, games, and activities, or grab the winning lotto ticket! Gamble Responsibly 1800 858 858

2a Vaughan Court, Berri  
Ph: (08) 8582 1049  
Email: shop@berrinewsagency.com.au  
www.berri.newspower.com.au

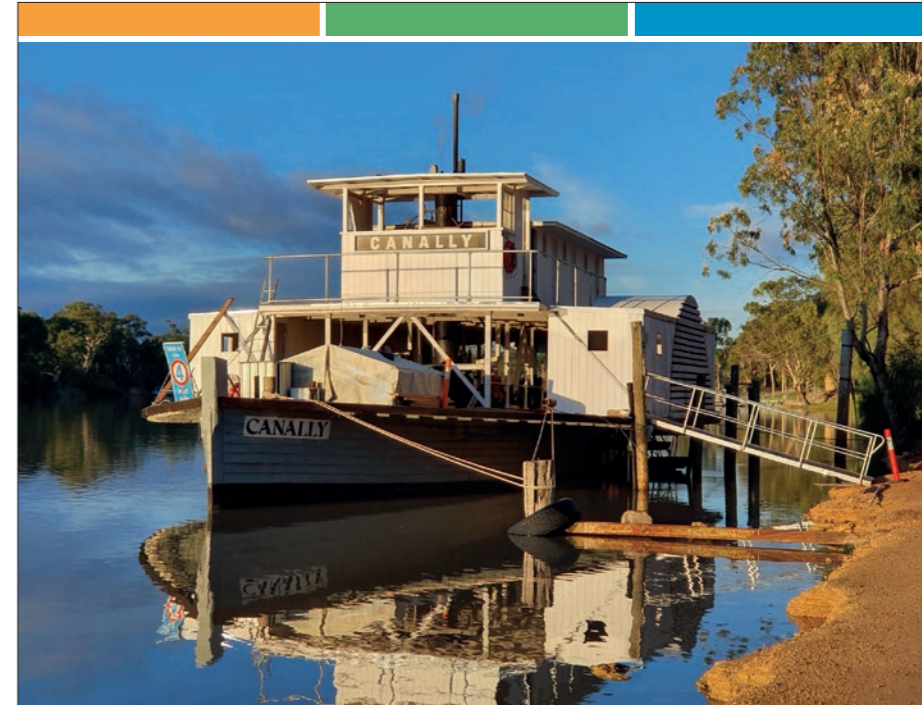


## Monash Adventure Playground

Relive your childhood or make new memories!

Monash Adventure Playground has been renovated but remains renowned for having tonnes of equipment to keep the family entertained. A giant maze, leaning towers and rope bridge are set in beautiful gardens with barbecue and picnic facilities. Open daily from 10am–5pm, excluding Christmas and Boxing Day.

Madison Avenue, Monash  
Ph: (08) 8582 5511  
www.berribarmera.sa.gov.au



## Visit Morgan, Cadell and Blanchetown – River History and Majestic Scenery

Begin in Morgan with a self-guided walk on the **heritage trail** and enjoy the **old wharf souvenir and gift shop** filled with local produce and gifts. **Morgan's Landseer Museum** has the amazing "Windows in Time" mural and many original artefacts from bygone eras. **Playgrounds** in Morgan and Cadell are fantastic stops for families with free barbecues and open space. Blanchetown has the first **lock on the river** and is a great spot to throw in a yabby net or line. **Graham Claxton Reserve** in Cadell is surrounded by breathtaking cliffs, playgrounds, barbecue, and wildlife.

If you are after family fun, and the beautiful night skies, then the Riverland west towns of **Morgan, Cadell and Blanchetown** are welcoming places for you.



Morgan VIO ||| Phone 8540 2643 ||| Visit Morgan Facebook



Discover  
more in  
**Renmark**  
discoverrenmark.com.au



**Renmark**  
Visitor Information Centre  
84 Murray Avenue, Renmark  
1300 661 704

f @ /DiscoverRenmark

**RENMARK**  
SOUTH AUSTRALIA



### Riverfun Houseboats

Offering an unforgettable experience on the mighty Murray River, one of Australia's most iconic waterways. Nestled in the heart of the Murray-Darling Basin, providing the perfect setting for a tranquil and adventurous getaway. These beautifully designed houseboats allow guests to explore at their own pace, making it an ideal choice for families, couples, or groups seeking relaxation and adventure.

Each houseboat is equipped with modern amenities, including spacious bedrooms, a fully equipped kitchen, and a comfortable living area that opens onto a sun-drenched deck. Enjoy activities, from fishing and water sports to birdwatching and bushwalking. Riverfun Houseboats promises an unforgettable escape combining modern comfort with the timeless allure of the Australian wilderness.

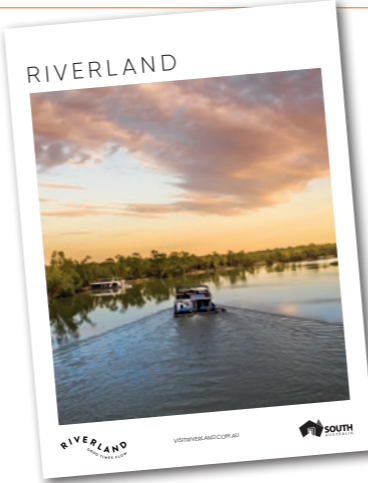
Lock 5 Road, Paringa  
Mob: 0418 839 223  
Email: [info@riverfun.com.au](mailto:info@riverfun.com.au)  
[www.riverfun.com.au](http://www.riverfun.com.au)



### River Murray Houseboats

Come experience a unique self-drive holiday on a River Murray Houseboat. The locally owned and operated business has won numerous South Australian Tourism Awards in recent years. With a wide variety of seven luxury spa houseboats in their fleet, make sure you contact River Murray Houseboats for your next adventure on the river. The people who know the boats and the river. Come stay a while, we're on river time!

Lock 5 Road, Paringa  
Mob: 0427 899 102  
Email: [info@rivermurrayhouseboats.com.au](mailto:info@rivermurrayhouseboats.com.au)  
[www.rivermurrayhouseboats.com.au](http://www.rivermurrayhouseboats.com.au)



Scan the QR code  
to read online.



### Rivergum Cruises

Enjoy uninterrupted views along the picturesque banks of the Murray River

Cruise the Murray River in style on board Qatar, a luxurious river cruiser, for an exclusive tour along the river from Waikerie. See the unique bird life, native flora, fauna and stunning 100-foot limestone cliffs. Qatar has a licensed bar and can cater for up to 11 passengers. Short two to three-hour cruises are available as well as our

popular Sunset Cruise. You can even design your own cruise to suit what you want to do; stop for a swim and enjoy a barbecue lunch with striking views of the Murray and surrounding landscape. Contact Rivergum Cruises today about getting on board for a memorable experience!

Leonard Norman Drive, Waikerie  
Mob: 0477 333 896  
Email: [info@rivergumcruises.com.au](mailto:info@rivergumcruises.com.au)  
[www.rivergumcruises.com.au](http://www.rivergumcruises.com.au)



Explore our river and its wildlife on a guided multi-day tour  
hosted on a luxury houseboat

T: 0417 533 063

E: [info@murrayrivertrails.com.au](mailto:info@murrayrivertrails.com.au)

W: [murrayrivertrails.com.au](http://murrayrivertrails.com.au)



### PARKER'S COD FARM TOURS

Unique, fascinating and extremely informative.

Brenton shares his passion for the aquaculture industry with an exclusive tour of his commercial Murray cod farm.

Tours available Friday, Saturday and Sunday, 11am and 2pm.

Online bookings essential.



WE WILL GET YOU OUT ON THE WATER TO EXPERIENCE THE BEST OF THE RIVERLAND!



e [riverlandboathire@gmail.com](mailto:riverlandboathire@gmail.com) / w [riverlandboathire.com.au](http://riverlandboathire.com.au)

e [renmarkrivercruises@gmail.com](mailto:renmarkrivercruises@gmail.com) / w [renmarkrivercruises.com.au](http://renmarkrivercruises.com.au)

So don't sit on the bank in envy! Contact us today. Bookings essential.

145 Murray Avenue, Renmark / 0400 760 386



# THE MURRAY

AUSTRALIA'S GREATEST RIVER IS AT THE HEART OF OUR REGION. HOW WOULD YOU LIKE TO ENJOY IT?



Headings Cliffs, Murtho

The Riverland is home to 362 kilometres of Murray River. That's the main watercourse – the mighty Murray herself – winding through a landscape of soaring cliffs, towering gum trees and fertile floodplains. But the Murray also comprises a whole other world of 'backwater' beauty, filled with wetlands, lagoons and creeks. Ready to immerse yourself?

## Cruise it

**Renmark River Cruises** offers fully catered tours including a 'Beer and Backwater Cruise', a sunset cruise out to Headings Cliffs and a cruise to the Riverland Wine Centre. **Rivergum Cruises** out of Waikerie has two- and three-hour river cruises as well as day cruises taking in popular lunch spots like Banrock Station and Overland Corner Hotel.

The **PS Industry**, built in 1910, offers cruises once a month as well as on long weekends and special occasions. It's also available for private charters. And for a nimble little backwater tour, **Canoe The Riverland** near Renmark offers popular dinghy tours.

The **Murray Princess** operates out of Mannum, running cruises into the Riverland lasting three to seven nights, with all meals, excursions and entertainment included.

## Play on it

Riverland towns are famous as places to indulge in water sports. Most are equipped with landing facilities for your watercraft. Don't have a boat? Don't worry! **Riverland Boat Hire** has multiple options including a 12-person pontoon boat (driver's licence required), tinnies and ski boat (boating licence required), and kayak and paddle boards.

## Fish on it

What are the secrets to the perfect fishing spot? Riverlanders especially love waters with deep holes, sandbars, submerged-log hidey holes and a slight current; they also like below the locks and beneath the willows.

The most popular angling and eating fish is callop. The legendary Murray cod can grow to more than a metre and is a prized catch, complete with bragging rights, but they must be returned to the water after you've taken the photo! Conversely, carp (a pest species) cannot be returned to the water; the annual SA Carp Frenzy fishing competition at Lake Bonney is a popular March event that actively (very actively!) contributes to its reduction.

You'll find bait and tackle in all major Riverland towns; fishing gear is also on sale at **Morgan Roadhouse** and **Waikerie United Servo**.



Canoe Adventures Riverland, Berri

### Eat and drink beside it

Question: If the Riverland's Murray section winds for 362 kilometres, how many kilometres of riverfront does it have?  
Answer: 724 kilometres – because there's two banks! This is why so many of the region's restaurants, cafés, pubs, clubs and cellar doors are in a position to serve river views with their fine foods.

Some of the well-known waterside places to eat and drink are Waikerie's **Viewpoint Café**, the **Renmark Club**, the **Barmera Club**, **River Jacks Café** (Berri), **The Lakes Café** (Barmera), **Wilkadene Woolshed Brewery** and the **Berri Hotel**. Cellar doors on the river include **Banrock Station** and **Whistling Kite**; the **Riverland Wine Centre** has more than 25 local wines on offer and enjoys stunning views.

Finally, don't forget the humble picnic, as much an institution as any. Thanks to fabulous local producers and providores (try **Ilalang Gourmet Foods**), you can make your riverbank feast as fancy as you please! (See Eat & Drink section.)

### Canoe it

**Canoe The Riverland** near Renmark does kayak tours for all ages and abilities. Travelling at your pace, they'll show you secret creeks and lagoons, as well as remarkable birdlife.

They do a morning tour, a popular sunset tour and a unique moonlight tour.

**Canoe Adventures Riverland** out of Berri offers kayak tours tailored to you. Explore the wonders of nature, the backwaters and the banks. Between sunrise and sunset, where you head and when you set off is up to you. Canoe Adventures also offers overnight and multi-day canoe-and-camp adventures and a 'Gourmet Kayak Tour' which includes sparkling non-alcoholic wine and a picnic box of local produce.

Want to go your own way? **Riverland Boat Hire** and **Canoe Adventures** both hire out kayaks and PFDs. **Roonka River Adventure Park**, a Scouts property open to all near Blanchetown, also has kayaks for hire.

### Walk it

The Riverland is a walker's paradise, one where you can follow the river on huge stretches of trails and tracks. We especially love Katarapko, Paringa Paddock, Martin Bend, Wilabalangaloo, the Sarnya Parker Walk and Waikerie Rotary Cliff Top Walk. Follow your instincts – or follow in the footsteps of a local guide and gain insights while you make tracks. **Murray River Trails** leads multi-day river-based experiences with plenty of local food along the way. **Banrock Station** does guided tours of its famous wetlands.

### Live on it

We're talking houseboats! We're talking cruising between towns, navigating gorgeous stretches of wild river and tying up at a shady mooring to enjoy a sundowner. The good news? You only need a driving licence to rent a houseboat... (See Stay section.)

### Fly over it

**Country Aviation** offers 30-minute flight-seeing tours out of Renmark airport; and if you're really feeling adventurous, **Waikerie Gliding Club** offers introductory flights in a glider!

### See it through the eyes of a Riverlander

There's no shortage of wonderful vantage points along the length of the river, from shady lawns to lofty cliff-top lookouts. But joining with a local to see the river as they see it always guarantees a different perspective... **Bellbird Tours** out of Berri specialises in birdwatching tours. And **Riverland Classic Limousines** can have you travelling in style between local food and wine producers.



Roonka River Adventure Park, Blanchetown

## LOOKING FOR MORE ADVENTURE?

**Loveday 4x4 Adventure Park:** This rugged, stay-and play 4WD adventure park is situated on 8000 acres of private property with 14 kilometres of riverfront. The park has a range of experiences on offer including 'The Turbo Can-Am Hot Lap', 'The Ultimate Off Road Experience' and kids rally driving. The park also has camping facilities and a tavern.

**Golf courses:** It's no surprise that the Riverland has some of the lushest golf courses in Australia! They also represent excellent value for money and many offer dining options and accommodation. Highlights include 18-hole courses at Barmera (Brian Crafter designed), Berri (one of SA's oldest clubs, established in 1924), Waikerie (with stunning villa accommodation) and Loxton (ranked in the Top 100 Australian country courses).

**Monash Adventure Park:** Providing fun for all ages, Monash Adventure Park has crazy leaning towers, a Burmese rope bridge, a huge maze, mini basketball, flying fox, slippery dip and barbecue facilities. Kids' adventures also await at **Loxton Pioneer Playground**, **Barmera Playspace** and **Morgan Rail to River Adventure Park**.

### Water and Nature Play Park:

Located in Waikerie, this park provides a combination of nature play, water elements and playground. Kids enjoy a six-metre-high teepee, a 40-metre double flying fox, six water play areas, a climbing wall and a wheelchair-friendly merry-go-round.

### Roonka River Adventure Park:

Located on the banks of the Murray River, Roonka specialises in creating memorable experiences through the great outdoors. Guests of all ages are encouraged to immerse themselves in the old-school camp experience with plenty of bunkhouse accommodation, camping, caravan sites and a launching facility. Expect a wide range of recreational activities, plenty of water sports and fully-equipped kitchens – perfect for groups!

### Connect with adventurous spirits at Lake Bonney:

Lake Bonney in Barmera makes for a perfect aquatic playground. Known for its calm waters and striking landscapes, it's been huge with water skiers and speed boat owners – including Donald Campbell who attempted to break the water speed record here, reaching 347.5 kilometres in 1964. It's also one of the best spots in the Riverland to watch a sunset.

## RIVERLAND BY THE NUMBERS

**362km** The length of the Murray River as it loops and meanders through the Riverland region from east to west.

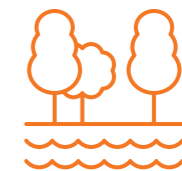


**Six** That's six locks and weirs along the river in our region. Locks are awesome to cruise through and just as interesting to watch as they empty and fill. (**Six** also happens to be the number of excellent golf courses along the river!)

**200 (at least!)** We're talking species of birds. Even if you're not one of the passionate twitchers who visit the region, you'll love spotting the like of kingfishers, whistling kites, spoonbills and shimmering rainbow bee-eaters.



**First!** The Riverland and Mallee areas have been home to First Nations people for millennia; there are important Indigenous sites along the length of the river, including canoe trees, middens, burial sites and other sacred places. (Please be respectful!)



**370,055ha**  
The sum hectareage of **18** National Parks, nature reserves and wilderness protection areas. That's a *lot* of wild country...

**32%** The share of the national grape-crush. Yep – a third of the national crush is done right here in the Riverland, making us the biggest wine producer in the country!





# THE RIVERLAND RUNS FREE

*Uncork Today,  
Raise A Glass To  
Tomorrow*

## VISIT THE RIVERLAND'S CELLAR DOORS MEET THE WINEMAKERS AND THEIR UNIQUE DROPS

**Angove Family Winemakers / St Agnes Distillery**  
271 Bookmark Ave, Renmark, SA 5341  
cellarsales@angove.com.au | (08) 8580 3148  
angove.com.au | stagnesdistillery.com.au

**Banrock Station**  
Holmes Rd, Kingston On Murray, SA 5331  
bscd@banrockstation.com.au | (08) 8583 0299  
banrockstation.com.au

**Bassham Wines**  
27 Bassham Rd, Barmera, SA 5345  
admin@basshamwines.com | 0417 883 706  
basshamwines.com

**Burk Salter Wines**  
72 Paisley Rd, Blanchetown, SA 5357  
admin@burksalterwines.com.au | (08) 8540 5023 | 0438 405 023  
burksalterwines.com.au

**Mallee Estate**  
20055 Renmark Ave, Renmark South, SA 5341  
sales@malleeestate.com.au | (08) 8595 1099  
malleeestate.com.au

**Ricca Terra** (By Appointment Only)  
68 Dunstone Rd, Barmera, SA 5345  
admin@riccaterrafarms.com.au | 0411 370 057  
riccaterra.com.au

**Salena Estate**  
837 Bookpurnong Rd, Bookpurnong, SA 5333  
reception@salenaestate.com.au | (08) 8584 1333  
salenaestate.com.au

**Spook Hill** (By Appointment Only)  
Spook Hill Wines, Cadell, SA 5321  
mail@spookhillwines.com  
spookhillwines.com

**Top Block Wines**  
95 Whitelaw Rd, Monash, SA 5342  
topblockwines@gmail.com | 0408 245 749  
topblockwines.com.au

**Whistling Kite Biodynamic Winery**  
73 Freundt Rd, New Residence, SA 5333  
adam@whistlingkitewines.com.au | 0421 384 658  
whistlingkitewines.com.au

**919 Wines**  
39 Hodges Rd, Glossop, SA 5344  
jenny@919wines.com.au | 0408 855 272  
919wines.com.au

**Riverland Wine Centre**  
8 Pike Creek Rd, Lyrup, SA 5343  
hello@riverlandwinecentre.com.au | 0428 831 045  
riverlandwinecentre.com.au

With more than 35 wineries to explore, you can savour a glass at the on-site cafe, which serves locally sourced Riverland produce. The Wine Centre boasts one of the most extensive assortments of Riverland wines from the region's cellar doors, and you'll also discover a variety of other wineries, including:

**Back Verandah**  
instagram.com/backverandahwines

**Byrne Vineyards**  
byrnevineyards.com.au

**Cirami Estate Wines**  
ciramiestate.com.au

**Dominic Wines**  
dominicwines.com

**Heart Of The Murray**  
heartofthemurray.com

**Illalangi**  
illalangi.com.au

**Kristalana Wines**  
facebook.com/528wine

**Matthews Fruit Wines**  
matthewsfruitwines.com.au

**Mundoo Ridge Wines**  
facebook.com/MundooRidgeWines

**Oakworks**  
oakworkswines@hotmail.com

**One Lonely Barrel**  
onelonelybarrel.com.au

**Oxford Landing**  
oxfordlanding.com

**Pike River Wines**  
riverlandwinecentre.com.au

**Settlers Block**  
settlersblock.com.au

**Sixty Eight Roses**  
instagram.com/sixtyeightroses

**Starrs Reach**  
starrsreach.com.au

**Temple Bruer Wines**  
templebruerwines.com

**Tom's Drop**  
tomsdropwines.com.au

The Wine Centre also stocks a selection of Riverland Geographically Indicated wines from the following wineries, which include:

**Alex Russell Wines**  
russellandsuitor.com.au

**Polka Drops** (Alcohol-Free)  
polkadrops.com.au

**Prometheus Wines**  
prometheuswines.com.au

**Thistledown Wines**  
thistledownwines.com

**Vanguardist Wines**  
vanguardistwines.com

## THE RIVERLAND REGION STOCKISTS A TOP-UP FOR EVERY JOURNEY

Berri Hotel

Earth Restaurant

Golden Elephant

Hotel Renmark and SignSave at Renmark Cellars

Local Cellars Renmark

Loxton Hotel

Overland Corner Hotel

Renmark Club

Waikerie Hotel Motel and SignSave Waikerie Hotel

BWS Barmera

BWS Berri

BWS Loxton

BWS Renmark

BWS Waikerie

## CONNECT WITH US SCAN THE QR CODE



eo@riverlandwine.com.au  
riverlandwine.com.au





Situated in the heart of the Riverland, our vineyards and Ramsar-accredited wetlands reflect our passion for good wine and dedication to protecting the environment. Come and experience our unique home. Experiences range from wine tasting, picnics and self-guided wetlands tours to guided bird watching tours. Restaurant open seven days for breakfast and lunch.



Scan the QR code or go to our website to book

Holmes Rd, Kingston on Murray / p (08) 8583 0299 / e bscd@banrockstation.com.au / w banrockstation.com.au

## All your coffee and café favourites

The Country Bakehouse is dedicated to providing the freshest and tastiest baked products available, as proven by the number of awards it has won both at a state and national level. We are sure to tempt the fussiest eaters.



Bakery classics like cakes, pies, slices and donuts



Great coffee done your way



Gluten-free products



Vegan/vegetarian meals available



Fresh bread and rolls baked daily



Seasonal and weekly specials for a tasty difference



32 East Terrace, Loxton p (08) 8584 6663 e cbake@riverland.net.au w countrybakehouse.com.au



Bassham Wines is a family-owned business leading the way in organic viticulture and emerging Mediterranean varieties.

Visit our Cellar Door, open daily from 10am to 5pm for wine tastings and sales.

27 BASSHAM ROAD, BARMERA



PH: 0417 883 706



BASSHAMWINES.COM

# YOUR ONE STOP TACKLE & BAIT SHOP!

Fresh Sandwiches

Hot Food

Cold Drinks

Barista Coffee

Fishing Equipment

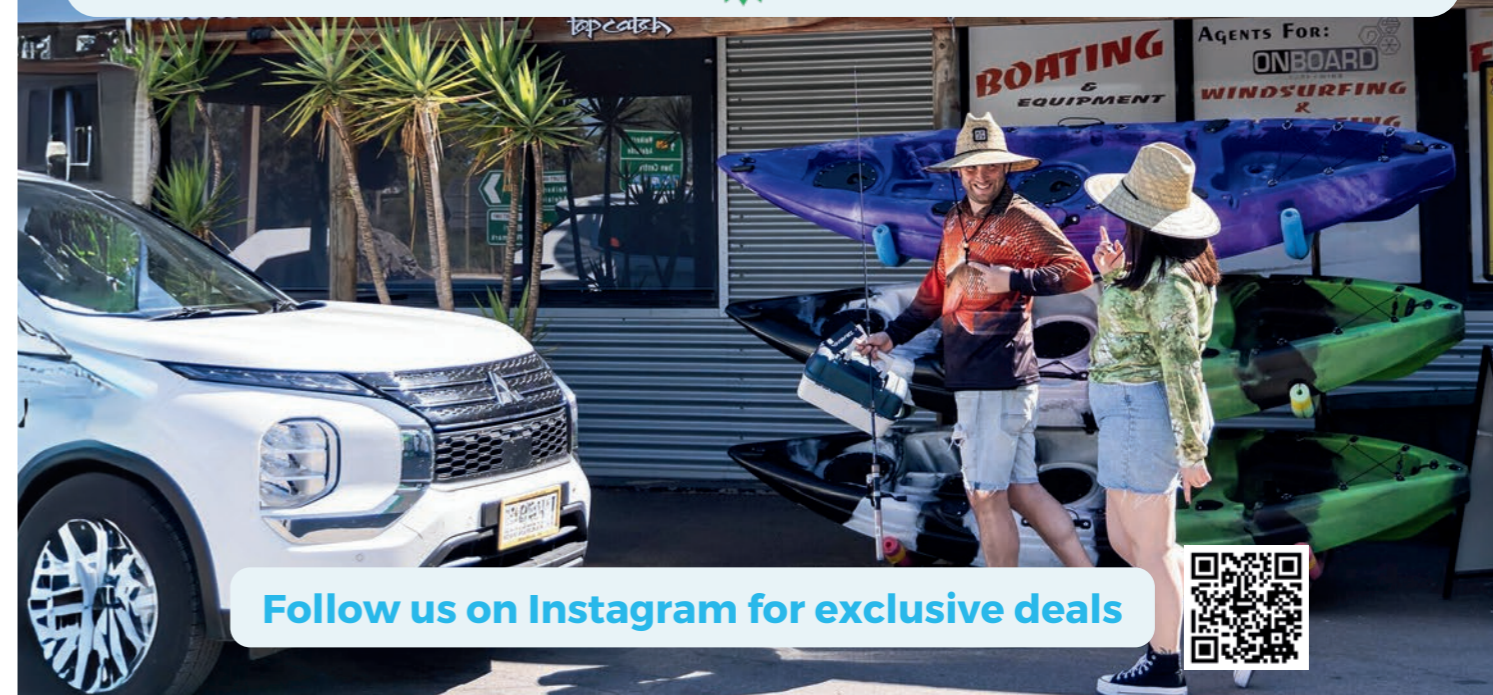
Weights and Lures

Top Catch Wall of Fame

Quality Fuel



LOCATED INSIDE  LAKE BONNEY



Follow us on Instagram for exclusive deals



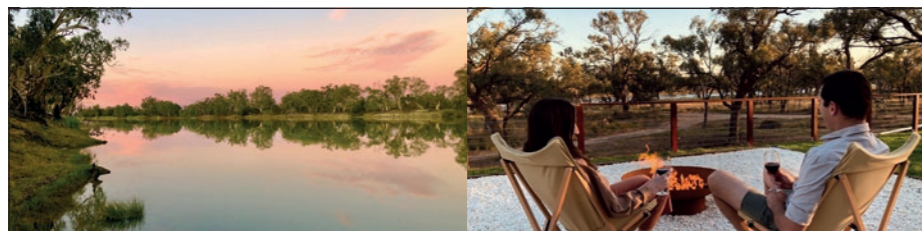


**'IT'S A CHARCOAL THING'**

**LILYDALE**  
FREE RANGE CHICKEN

We have the Riverland's best and only charcoal chicken, plus our amazing chips, seafood, steak sandwiches, burgers and salads. Your taste buds will definitely thank us. Drop in and see the team for friendly service with a smile every time.

37 Renmark Avenue, Renmark M: 0416 860 148 E: admin@riverlandcharcoalchicken.com.au Riverland Charcoal Chicken

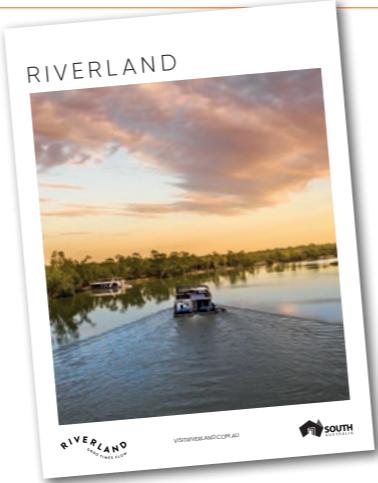


### Parcoola Retreats

*Embrace nature at a private riverside retreat*

- A luxury rural retreat with the Murray River flowing 120 metres from the doorstep.
- Features a fully-equipped kitchen, bathroom, indoor and outdoor living areas including deck with river views, outdoor firepit and outdoor clawfoot bathtub.
- Two queen bedrooms sleeping up to four people. Children welcome.
- Self-contained accommodation with breakfast provisions provided.
- Explore the river by canoe or on foot. Single kayaks provided and walking trails on the property.
- In-house guest services such as massage and meal hampers.

14376 Goyder Highway, Overland Corner  
Email: [hello@parcoolaretreats.com.au](mailto:hello@parcoolaretreats.com.au)  
[www.parcoolaretreats.com.au](http://www.parcoolaretreats.com.au)



Scan the QR code to read online.



## riverland sunfresh

LOCALLY OWNED AND FAMILY OPERATED • BEST QUALITY PIZZA AND YIROS IN TOWN • OPEN 7 DAYS

Providing the highest quality groceries, from the best quality seafood we can get our hands on, to perfectly roasted and flavoured nuts, or even delicious Greek pastries.

We've got everything you'd need, at the lowest prices. We also have plenty of international and continental products for you to enjoy.

Join us for a coffee and treat yourself to one of our delectable homemade cakes, sweets and desserts.



246-256 Renmark Ave, Renmark Ph (08) 8586 4566 E [con@riverlandsunfresh.net](mailto:con@riverlandsunfresh.net) W [riverlandsunfresh.net.au](http://riverlandsunfresh.net.au)

## PREMIUM MEAT. LOCALLY SOURCED PORK AND LAMB.



Monday to Friday 8:30 am - 5:30 pm  
Saturday 8:30 am - 11:30 am  
Sunday and Public Holidays Closed

**(08) 8582 4885** Berri North Meat Store  
28 Zante Road, Berri SA 5343  
[berrinorthmeat@gmail.com](mailto:berrinorthmeat@gmail.com)

Shane's specialty is his home-made smallgoods, and his saying is:

**IF I DON'T MAKE IT,  
I DON'T SELL IT**



## The Perfect Blend.

Here you'll find a delicious range of gins all carefully handcrafted and distilled in our very own boutique distillery. Showcasing the best of local produce and the highest quality, we create the perfect blend with all that Rustons offers.

Come indulge in our delicious brunch, relax for a long lunch, explore our gins and tastings, enjoy fresh scones, cakes and coffee or even wander through our extensive gardens.

We welcome you to come for a visit, grab a bottle of our timeless spirits or try a glass amongst the roses.



70 Moorna Street, Renmark  
p (08) 8586 6191  
e [sheree@rustons.com.au](mailto:sheree@rustons.com.au)  
w [rustons.com.au](http://rustons.com.au)

# EAT & DRINK

SOUTH AUSTRALIA'S HAVEN OF FLAVOUR



Temperance Restaurant, Renmark

Fertile floodplains, ancient soils and year-round sunshine has made this region one of Australia's richest food baskets. Visitors will find themselves spoiled for choice, especially when it comes to citrus fruit, stone fruit, almonds, olives and local brandy.

And grapes? We have no shortage of those! The Riverland is the nation's largest producer of wine and is fostering a growing number of boutique producers. Be sure to enjoy the classic wine varieties, but don't miss trying emerging alternate varieties such as Montepulciano, Vermentino, Touriga Nacional and Tempranillo – much of it sustainably grown.

The region supports a flourishing restaurant and café scene. Look out also for growers and producers selling their wares at small providores, collectives and cellar doors – you'll arrive to a warm welcome and leave with something sure to satisfy!

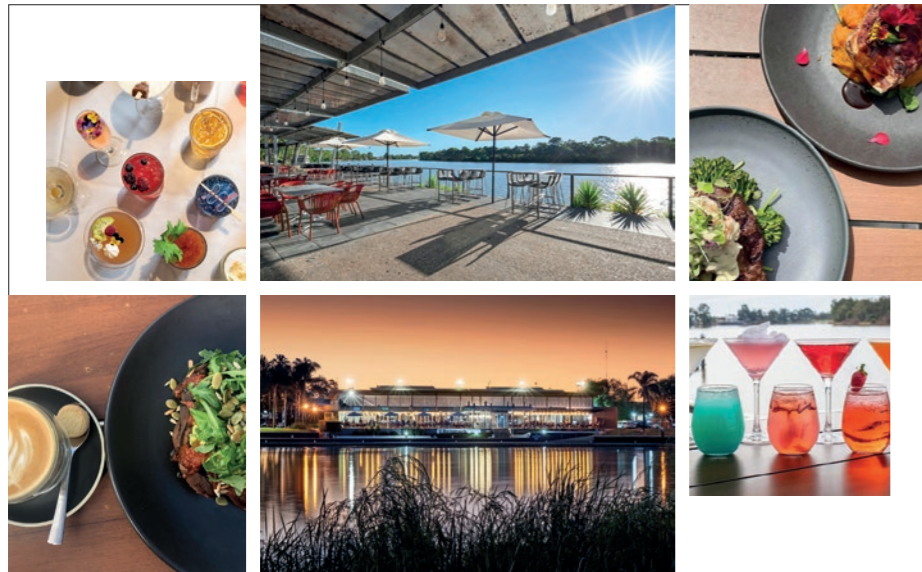
## Cellar door dining

**Banrock Station** has a beautiful dining area, elevated to afford views over the wetlands. There's a breakfast and lunch menu offering the likes of baked Murray cod and Jachmann cider-glazed pork. **Whistling Kite Wines** serves delicious wood-fired pizzas. **Eleni's Restaurant** at Mallee Estate in Renmark offers authentic Greek Cuisine, and **Cucina 837** at Salena Estate, Loxton, serves fine Italian fare (and a celebrated homemade Limoncello!). **23rd Street Distillery** offers a relaxed, contemporary dining experience with dishes inspired by the region.

Most cellar doors offer grazing plates. (See Cellar Door panel on page 32.)



Riverland Wine Centre, Lyrup



## Meet me riverside

Open for meals seven days a week, serving breakfast, lunch and dinner.

The multi award-winning Renmark Club overlooks the beautiful Murray River. The Renmark Club is a fully licensed venue with a welcoming atmosphere. Enjoy al fresco dining, high quality, and great value meals in our family-friendly dining room, equipped with a kid's club playroom, sure to keep them entertained.

Our facilities include: • A large attractive dining room with panoramic views over the Murray River • Al fresco dining right on the water's edge • Gaming room with 40 of the latest gaming machines (Gamble Responsibly 1800 858 858) • Rivers edge function centre, perfect for intimate or large weddings, corporate meetings, and events.



160 Murray Avenue, Renmark  
 p (08) 8586 6611 e enquiry@renmarkclub.com.au w renmarkclub.com.au



### The Loxton Club

A family-friendly atmosphere and an undercover playground makes it the go-to place for a great meal and a great time. Open Wednesday to Sunday 6–8pm for dinner and Friday to Sunday 12–2pm for lunch. Trivia nights are hosted every Wednesday, and Thursday is family night which means kids eat free. Friday's a lunch special and Sunday offers a pint and Parmi deal.

27 Bookpurnong Terrace, Loxton  
 Ph: (08) 8584 7353  
 Email: info@loxtonclub.com.au  
 www.loxtonclub.com.au



### Nippy's

ICONIC BRAND. ICONIC PLACE.

A proud South Australian-owned, family-run producer of real fruit juices and flavoured milk drinks since 1933. Come and experience our Waikerie factory, the big orange building — you can't miss it! Stop by and learn the history of Nippy's while enjoying Australia's favourite cold juices, flavoured milks, and fresh local citrus. Monday to Friday 8am–4pm.

2 Ian Oliver Drive, Waikerie  
 Ph: (08) 8541 0600  
 www.nippys.com.au



## The Lakes CAFE & BAKERY



A CAFÉ WITH RESTAURANT QUALITIES AND A GREAT VIEW OF LAKE BONNEY.

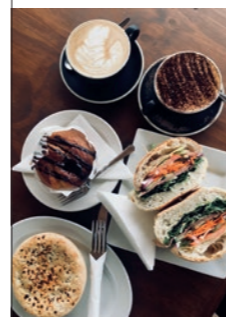


TREAT YOURSELF TO SOMETHING SPECIAL OR JUST DROP IN FOR A SNACK OR A COFFEE.

WHITMORE AVENUE, BARMERA  
 P (08) 8588 2000  
 E SUNBAKE@RIVERLAND.NET.AU  
 @ THE LAKES CAFE





COFFEE AND FRIENDS MAKE THE PERFECT BLEND




A unique bakery café boasting local products, with a breakfast and lunch menu and plenty to choose from. Sit back and relax while the kids have fun in our playground.


17366 STURT HIGHWAY, BARMERA  
 M 0457 236 235  
 @ BONNEYVIEW BAKERY


berrihotel.com.au  
 /BerriHotel  
 For more information  
 ph (08) 8582 1411



RELAX AND UNWIND  
 IN THE RIVERLAND



THE TAVERN



bigrivergolfandcountryclub.com.au  
 /bigrivergolfandcountryclub  
 For more information  
 ph (08) 8582 3425

# Salena

ESTATE

**A family legacy  
 creating award  
 winning wines**

www.salenaestate.com.au | 08 8584 1333 | 837 Bookpurnong Road, Bookpurnong

## LOCK 4 DISTILLERY

Spirits inspired by  
 flavours of the  
 Riverland



Woolshed Brewery, Murtho

### Growers and producers

**Illalangi Gourmet Foods** in Waikerie is known for its olive tapenades, homemade relishes, award-winning wattle seed balsamic and local gourmet grazing boxes (perfect for picnics). **Quirkeychocs** are delicious chocolate-covered apricot bits, made by third-generation apricot growers in Loxton. **Almondco**, near Renmark, is the place for locally grown nuts. **Nippy's** in Waikerie is a Riverland institution: it's family-owned, famous for its juices and 50 years old!

### All types of dining

The Murray River is lined with historic pubs and clubs, offering bistro dining and awesome views. The **Renmark Club** offers

a much-loved riverside deck, perfect for locally-inspired dishes like Rosedale kangaroo. The gorgeous art deco **Hotel Renmark** has four dining areas and a menu featuring local Riverland produce; try their new restaurant, 'Temperance'. **Earth Restaurant** in Berri offers the best of Riverland producers in a relaxed setting. The **Barmera Club** provides all your pub-style favourites (and awesome views of Lake Bonney) while the **Berri Hotel** on the riverfront is the place to relax and enjoy a delicious meal. The newly renovated **Loxton Hotel** offers delicious breakfast and lunch in their charming 1908 Café. Steeped in history, the **Historic Overland Corner Hotel** is open for lunch and dinner and has live entertainment on weekends.

With home-style meals, a large outdoor dining area and original dining room, the 150-year-old heritage-listed **Blanchetown Hotel** (overlooking Lock 1) is a treat for history buffs. The **Waikerie Hotel** offers modern hotel-style fare and a contemporary, cosy fireplace, while the **Paringa Hotel Motel** serves a great pub meal. **The Lavender Café** in Glossop has a generous menu featuring Italian staples; look out for occasional pig-on-a-spit weekends at **River Jacks Café** in Berri; **The Lakes Café** in Barmera lives up to its name with mouthwatering views; and **Flavours of the Riverland** in Barmera is the place to be for gourmet regional food. The **Mallee Fowl Restaurant** is an institution, loved for its quirky interior.

## TWENTY THIRD STREET DISTILLERY STANDS ON A CENTURY OLD SITE IN RENMARK, SA.

In 1916 it became Renmano Winery - the first co-operatively owned winery in Australia. After a successful tenure and longstanding relationship with the community for almost 100 years, in 2004 upon Renmano's departure, the site fell into disrepair. It rest dormant until 2014 when it was purchased by the family-owned Bickford's Group.

Situated on the historical site, Twenty Third Street Distillery is also home to our unique Visitor Centre.



The relaxed atmosphere allows guests to discover heritage intertwined with contemporary elegance. Experience the taste of hand craftsmanship through our various tasting flights and enjoy the pleasures of modern Australian food over lunch or dinner paired with a delicious cocktail.

If you want to be a gin connoisseur for a day, we also offer gin masterclasses where you can learn about the history of gin and the balance of botanicals while creating your own 200ml signature gin to take home and enjoy.

You can even host your next function or event in our beautiful spaces available for hire to make your next occasion one to remember.

Whether it's a family outing, a celebration, or simply a day of indulgence, our doors are open, waiting to make your visit special.

**OPEN Monday to Wednesday + Sunday / 10am - 4pm  
Thursday to Saturday / 10am - 10pm**



Corner of 23rd Street and Renmark Avenue, Renmark SA 5341  
Ph/8586 8500 W/23rdstreetdistillery.com.au

**@/23rdstreetdistillery**



VOK02320826



To create an innovative local dining experience, sharing the finest Riverland produce with people who love good, honest food.

Life is but a speck of time on earth: live it now.

Salt and Pepper Catering,  
Earth Restaurant and Lips Gelato  
Peter and Lyn Kent / PH: (08) 8582 4775  
Lyn 0407 609 807 / Peter 0400 884 993

[saltandpeppercatering.com.au](http://saltandpeppercatering.com.au)  
"Striving to use local produce"



(08) 8586 6755  
[www.hotelrenmark.com.au](http://www.hotelrenmark.com.au)

Open 7 Days



ENJOY THE BEST VIEWS

*In the Riverland*

AT VIEWPOINT CAFÉ

EAT  
DRINK  
LOCAL

Eat, Give, ❤️ Local

is the mantra of this gourmet gem of the Riverland.

A must-stop on your Riverland adventure, showcasing some of the finest produce the region and our state has to offer.

Coming Soon NEW Shop & Café  
4 Penaluna Drive  
(Waikerie Silo Carpark)

Waikerie SA | 0427 419 037  
[illalangi.com.au](http://illalangi.com.au)

Scan,  
Order  
& Collect



NEW MENU

Viewpoint Cafe is Waikerie's ultimate dining destination! Serving fresh sandwiches, award-winning pies, baked goods from Loxton Bakery, hot food and homemade curries. Viewpoint is your one-stop shop!

Grab a Vittoria coffee, top up your travel essentials, and fill your car with quality fuel.



LOCAL PRODUCE



BARISTA COFFEE

OPEN 7 DAYS 6AM - 10PM





Arrost Coffee, Renmark

### Cheers!

There are 20 pubs and clubs in the Riverland. Don't miss the **Overland Corner Hotel** (established in 1859 with lashings of history and a resident ghost) and **The Hotel Renmark** (a huge art deco pub that was the first community-owned hotel in the British Empire; it still returns profits to the town). Try also the **Loxton** and **Waikerie Hotels** (both beautifully renovated), the **Renmark Club** and **Berri Hotel** (overlooking the river) and **Barmera Club** for views of Lake Bonney.

The very cool **Wilkadene Woolshed Brewery** opened in 2009 and is now a firm waterside favourite for a brew with a view. It was fashioned from an old shearing shed on historic Wilkadene Station north of Renmark. Today, it serves its premium craft beers and 'hard lemonade' on a huge deck, as well as picnic packs featuring Riverland olives, chutneys and mettwurst.

The **Riverland Wine Centre** in Lyrup represents more than 25 Riverland wineries in their extraordinary riverside cellar door. Call into this amazing one-stop-shop and purchase a tasting paddle – ideally enjoyed on the deck overlooking the river!

Renmark's **23rd Street Distillery** offers a gin-blending masterclass. **Rustons**, famous for its stunning rose gardens, is now home to a vodka and gin distillery – and offers especially fragrant tastings! **St Agnes Distillery** and **Barrel Halls** (within Angove's cellar door, Renmark) has been distilling since 1925. All St Agnes brandies are aged in small oak barrels in their historic cellars. Tours run daily, but bookings are essential.

### Don't forget the coffee...

**Arrost Coffee** is based in the old Renmark fire station! It's also an award-winning brewery. It supplies the region with its very own bean-blends and roasts, and has a popular café serving cake and coffee, and gourmet breakfast burgers on weekends. **HeBrews Coffee Co.** also roast their own beans in their cosy Waikerie café.



Mallee Estate Wines, Renmark

## CELLAR DOORS

Experiences at Riverland cellar doors include boutique tastings, local platters and weekend entertainment. Popular winery tours book out, so be sure to book ahead.

**Riverland Wine Centre (Lyrup):** 25 different Riverland wineries under one roof! Taste the wines, discover more about the producers and enjoy stellar river views from the lofty deck.

**Angove Family Winemakers (Renmark):** This 1886 winery is home to not one but three famous names: Angove Wines, St Agnes Brandy and Stones Green Ginger wine. Taste them all at the evocative cellar door.

**Mallee Estate Wines (Renmark):** Taste wines at this family-owned producer and take a guided winery tour with the winemaker, including a trip to the top of the tanks!

**919 Wines (Glossop):** This organic producer grows exciting and emerging varieties including Petit Manseng, Vermentino, Sangiovese, Touriga Nacional, Tempranillo and Durif. Tours available.

**Burk Salter Wines (Blanchetown):** Join the hour-long tour, conducted aboard a gorgeous 1927 Chevrolet Truck. Enjoy local bird life, flora, history – and award-winning wines.

**Bassham Wines (near Barmera):** This family-owned business

practices organic viticulture and grows emerging varieties.

**Whistling Kite Biodynamic Wines (near Loxton):** Producing traditional and emerging varieties (like Petit Manseng, Montepulciano and Mencia), Whistling Kite is a certified organic winery on the Murray River.

**Banrock Station Wine & Wetland Centre (Kingston on Murray):** Set amongst its famous wetlands, Banrock Station produces award-winning local wines and offers guided tastings.

**Salena Estate (near Loxton):** This family-owned winery produces reds, whites, rosés, sparklings and tawny port.

**Berri Estates (Berri):** Visit the largest winery in the southern hemisphere, responsible for a third of SA's wine crush. Visit the cellar door for tastings and a big story!

**Spook Hill Wines, Cadell:** Home to the local cemetery, Spook Hill grows wines on the rich soils of a former oxbow lake. They love their reds and have the medals to prove it. Tastings by appointment.

Scan the QR code for more information



# The Cellar door awaits...

The Angove family were pioneers of the Riverland, establishing the region's first winery and distillery in Renmark in 1910.

Today, the family continues its commitment to excellence. Angove Family Winemakers is Australia's leading organic grape grower and winemaker, while the St Agnes Distillery and Barrel Halls develop and nurture premium brandy with age statements of 3 to 40 years along with Blind Tiger Organic Gin. It is also the home of Stone's Original Green Ginger wine.

Visitors are welcome to taste a range of premium, multi-award-winning Angove wines at the cellar door, located right in the beating heart of the winery.

The cellar door is open seven days a week and regularly hosts local artists and jewellery designers in addition to offering local produce for sale.

Tours of the St Agnes Distillery are also available, with bookings required in advance.

*We look forward to welcoming you soon.*

Our Cellar Door is open  
10am - 5pm  
Monday to Friday  
& 11am - 4pm  
Saturday & Sunday



**ANGOVE** SINCE 1886 FAMILY WINEMAKERS  
**ST AGNES** EST. 1925 DISTILLERY

Bookmark Avenue, Renmark | Ph (08) 8580 3148  
angove.com.au | cellarsales@angove.com.au

### RIVERSIDE RETREAT

Just minutes from town, the **Berri Riverside Holiday Park** is the perfect base camp for families visiting the Riverland. Lounge by the pool, sleep in spacious cabins and explore the Berri township.

See advertisement page 53

### PUB FAVOURITES

Since 1912, the **Waikerie Hotel Motel** has served good food, drinks and times to Riverland residents and tourists passing through the town. Visit Oscar's Bistro & Bar for classic pub favourites and a glass of local wine.

See advertisement inside back cover



### Blanchetown Hotel

Visit our historic dining room, showing off the original stonework or enjoy the outdoor view overlooking the Murray River from our massive undercover al fresco dining area. We cater for private functions, birthdays and special events. Let us know what your needs are and we'll work with you to make it happen.

• Sports Bar with TAB • Walk-in Bottle Shop • Pokies (Gamble Responsibly 1800 858 858)

1 Egerton Street, Blanchetown  
Ph: (08) 8540 5017  
Email: blanchetownhotell@gmail.com  
www.blanchetownhotel.com.au



### Burk Salter Boutique Wines

Producers of award-winning wines

Take the time to sample the award-winning boutique wines, in the relaxed atmosphere at Burk Salter overlooking the family vineyards and Murray River. Also offering B&B accommodation and Wine & Wetland tours.

72 Paisley Road, Blanchetown  
Ph: (08) 8540 5023  
Email: admin@burksalterwines.com.au  
www.burksalterwines.com.au



## Marr's Bakery

7 Fourth St,  
Morgan SA 50320  
(08) 8540 2005

### Opening times

Monday, Wednesday - Friday  
7am - 3pm

Saturday - Sunday  
8am - 3pm

Tuesday  
Closed



You'll find fresh kitchener buns, savoury meat pies, sandwich classics, finger buns and other delicious baked goods at Marr's Bakery in Morgan.

*A classic country bakery selling bread to takeaway, baked fresh every morning.*



Grab a hot coffee to-go or indulge in an old-fashioned milkshake made in-house by our friendly staff.

## The best value-for-money pub in the Riverland!

Just five minutes from Renmark on the Sturt Highway, the **Paringa Hotel Motel** is open seven days a week for lunch and dinner offering delicious country pub meals with a front bar, TAB, Keno, motel accommodation, gaming room with 18 machines, a pet-friendly beer garden, and a bottle shop. (Gamble Responsibly 1800 858 858)

A free shuttle service is available to take you to and from the hotel within Renmark and Paringa.



2 Murtho Road, Paringa  
p (08) 8595 5005 e paringahotel@gmail.com  
w paringahotel.com.au



Bistro | 1908 Café | Bistro Bar | Sports Bar | Drive-Thru Bottleshop | Accommodation | Functions

### Winner Six National & State AHA Excellence Awards 2022

NATIONAL Best  
Redeveloped Hotel  
General Division

NATIONAL Best  
Bar Presentation &  
Service Regional

SA Best  
Overall Hotel  
Country

SA Best  
Redeveloped Hotel  
Country

SA Best  
Bar Presentation &  
Experience Country

SA Best  
Gaming Venue  
Runner Up

[www.loxtonhotel.com.au](http://www.loxtonhotel.com.au) | 1800 656 686 | 08 8584 7266



## Brown's Well Tavern & The Paruna General Store

### Brown's Well Tavern



Our charming tavern provides a warm and inviting atmosphere, creating a sense of camaraderie and relaxation. Its rustic decor and friendly staff have quickly made this a favourite gathering place, renowned for its delectable meals that feature a range of appetising options.

### Paruna General Store



A cosy and welcoming store that offers a wide range of goods and services. A hub for locals to gather, grab essential supplies, and enjoy a friendly atmosphere, priding itself on its commitment to quality and customer satisfaction.

28 Railway Terrace, Paruna / Contact: 0439 761 904 / Browns Well Tavern / Takeaway available / Bookings & functions welcome

**Flavours of the Riverland**  
**CAFE**  
 Gourmet Regional Food  
 Coffee & Cake Light Lunches  
 Trading Hours: Friday to Monday 10.00am - 3.00pm  
 Ph. 8588 2159

**EAT LOCAL SOUTH AUSTRALIA**

## Re-opening Summer 2023!

GOURMET REGIONAL PRODUCE  
 GROUP BOOKINGS WELCOME  
 THE HOME OF BACKYARD BREAD

Follow us on Social Media for more updates!  
 For potential hiring opportunities, please email [divyaa@nuvpetroleum.com.au](mailto:divyaa@nuvpetroleum.com.au)  
 17302 Sturt Highway, Barmera, 5345



## TOP COURSE, GREAT GREENS, FRIENDLY PEOPLE

WE THINK IT IS THE RIVERLAND'S BEST 18 HOLES. VISITORS VERY WELCOME. STAY AND PLAY PACKAGES AT OUR 5-STAR CAMPING GROUND. BOOK ONLINE.



196 EDWARDS ROAD, LOXTON NORTH PH: (08) 8584 1490  
[WWW.LOXTONGOLF.COM.AU](http://WWW.LOXTONGOLF.COM.AU)

**QUIRKEYCOTS**  
 PREMIUM AUSTRALIAN DRIED APRICOTS

"The chocolate apricot balls are the best. The chocolate is really smooth. I can't go back to the other brands now!" Julie A

"My daughter has already demolished a kilo and onto her second! The real fruit makes a huge difference and the chocolate is so smooth and delicious." Julie S

"We've never had the chocolate apricots before... But after the first packet we were hooked.." Gary B

Quirkeycots apricots are locally grown, processed and packed by the Quirke family on their orchards.

Quirkeychocs are made from 100% pure Australian dried apricot centres with no added sugar or bulking ingredients and are coated in premium milk or dark chocolate.

Find our products in Koch's Foodland outlets and also selected stores throughout the Riverland or online.

PO BOX 509, Loxton SA 5333  
 E [sales@quirkeycots.com.au](mailto:sales@quirkeycots.com.au) W [quirkeycots.com.au](http://quirkeycots.com.au)

**River Jack's Cafe**

## Delicious delights

Nestled on the banks of the Berri riverfront, our Mediterranean-inspired café is a favourite of locals and tourists alike. Offering breakfast all day, delicious lunches, creative specials and mouth-watering cakes. Enjoy a hot or cold Amanti coffee and perhaps a fresh juice or smoothie on the sun-drenched deck.

19 Riverview Drive, Berri PH: (08) 8582 4309  
 E [enquiries@riverjacks.com.au](mailto:enquiries@riverjacks.com.au) W [riverjacks.com.au](http://riverjacks.com.au)



### Arrosto Coffee

The Riverland's own multi award-winning boutique coffee roaster

Arrosto Coffee transformed the old Renmark fire station into a vibrant café and roastery allowing customers to enjoy the unique experience of tasting coffee at the source.

Serving coffee, cakes and other treats daily. Pop in on a Saturday or Sunday morning

for their famous gourmet breakfast burgers (served until midday).

Monday–Saturday, 7am–1pm

Sunday and most public holidays, 8am–1pm

152, 18th Street, Renmark  
Mob: 0427 223 853  
Email: sales@arrostocoffee.com.au  
www.arrostocoffee.com.au



### Whistling Kite Biodynamic Wine

Watching over the earth

A brilliant example of how variety selection and sustainable farming practices can produce a property in true harmony. Filled with local bird life, regent parrots and whistling kites, beneficial insects and local wildlife, all living in harmony. All wines are wild yeast ferments, giving the fruit a chance to express its true flavour, reflecting the unique terroir of the vineyard. Visit us and try it for yourself!

73 Freundt Road, New Residence  
Mob: 0421 384 658  
Email: info@whistlingkitewines.com.au  
www.whistlingkitewines.com.au



Winery cellar door open by appointment only. See website for details.  
River Terrace, Cadell E: mail@spookhillwines.com



## Spook Hill

Discover the art of small-scale, boutique winemaking at our Riverland winery and cellar door. Using time honoured, traditional winemaking methods of open fermentation, basket pressing with barrel ageing, Spook Hill Wines produce a diverse range of emerging varieties.

Spook Hill Wines can be found at selected Riverland outlets or online at [www.spookhillwines.com](http://www.spookhillwines.com)

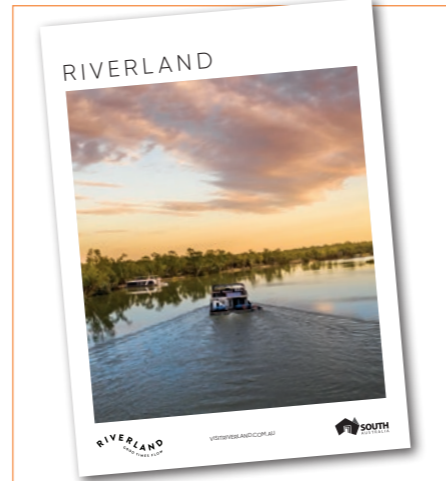


### The Lavender Café

The Lavender Café is a unique dining experience for the entire family to enjoy. Set amongst a lavender farm and surrounded by vineyards, our authentic Italian café truly offers something for everyone. As a family-owned and operated business, we pride ourselves on offering

exceptional service and delicious Italian cuisine to all who visit us. Our freshly made in-house, wood-fired pizzas, pastas and other Italian delights, are just some of the many reasons why, The Lavender Café is the perfect place to enjoy breakfast, lunch and dinner.

19 Dalziel Road, Glossop  
Mob: 0487 145 059  
Email: anthony@thelavendercafe.com.au  
www.thelavendercafe.com.au



Scan the QR code to read online.



## TERMINUS HOTEL

ALL TRACKS LEAD TO THE TERMINUS

# MORGAN

EST. 1878





## STAY WITH US / FRIENDLY STAFF VIEW THE MURRAY RIVER

A great option for a delicious, tasty pub meal, frosty beer or an overnight stay looking out on the picturesque Murray River. Dine-in or take away available.

15 Railway Terrace, Morgan P 08 8540 2006 E terminusmorgan@hotmail.com f TerminusHotelMorgan @ terminus\_hotel\_morgan

# COME IN & TRY... AUSTRALIA'S BEST #1

## BONELESS HAM & BRATWURST



Locally Processed Meats

Poultry

Seafood

Own-made Smallgoods

Fish

Condiments

**Waikerie Store:** 18 McCoy St – Ph 8541 4777

**Barmera Store:** 15 Barwell Ave – Ph 8588 1246

Visit us on







## COME AND VISIT ONE OF THE RIVERLAND'S GREAT CLUBS

Enjoy a meal in the friendly atmosphere. Open seven days. Serving dinner from Wednesday to Saturday and lunch Thursday to Saturday. Stone grill your own meal at your table, play a game of eight-ball, lotto or the pokies and join the member's club for discounted drinks. Pets are welcome out the back. Dining reservations are recommended. You are always welcome!

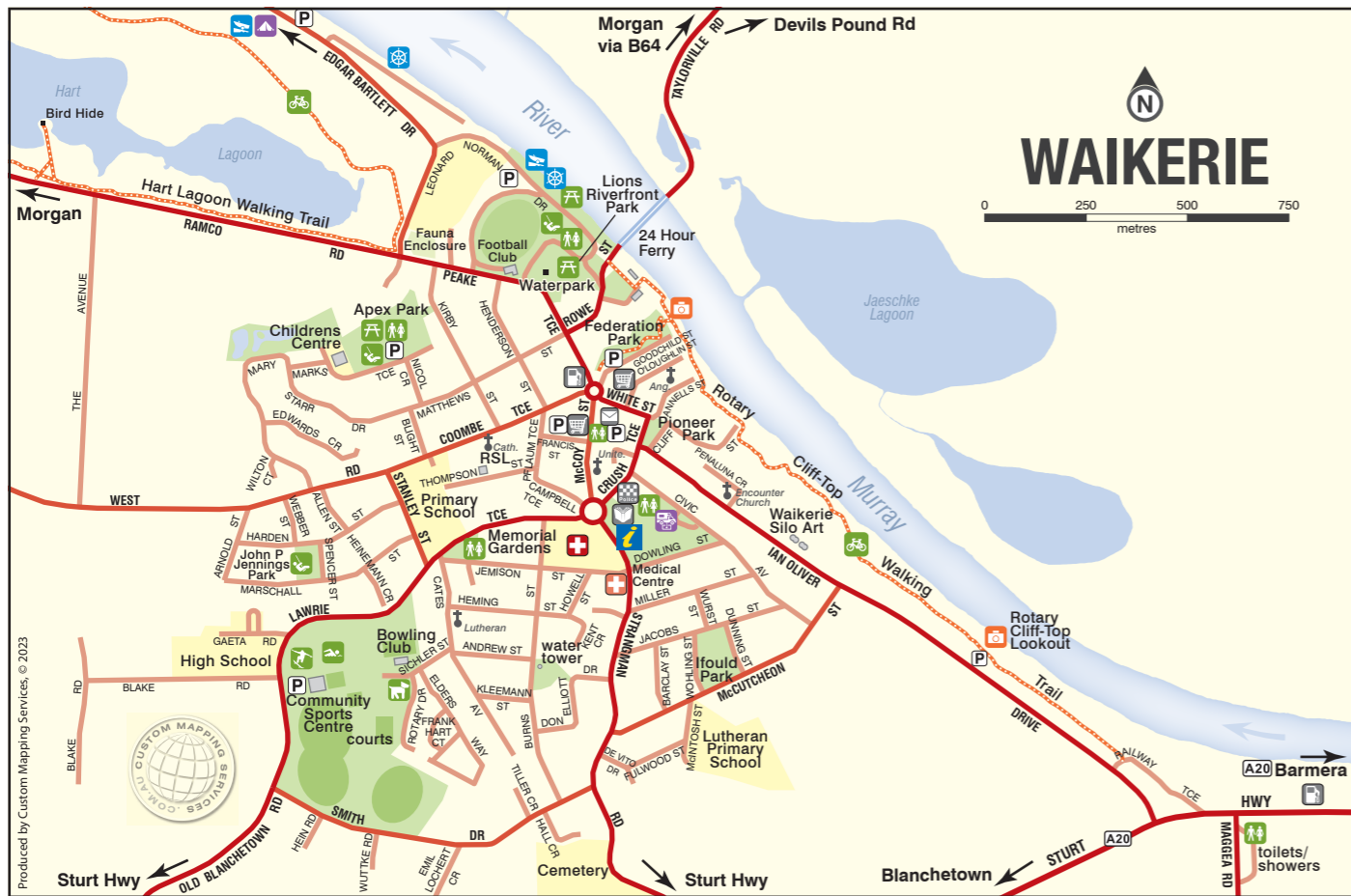
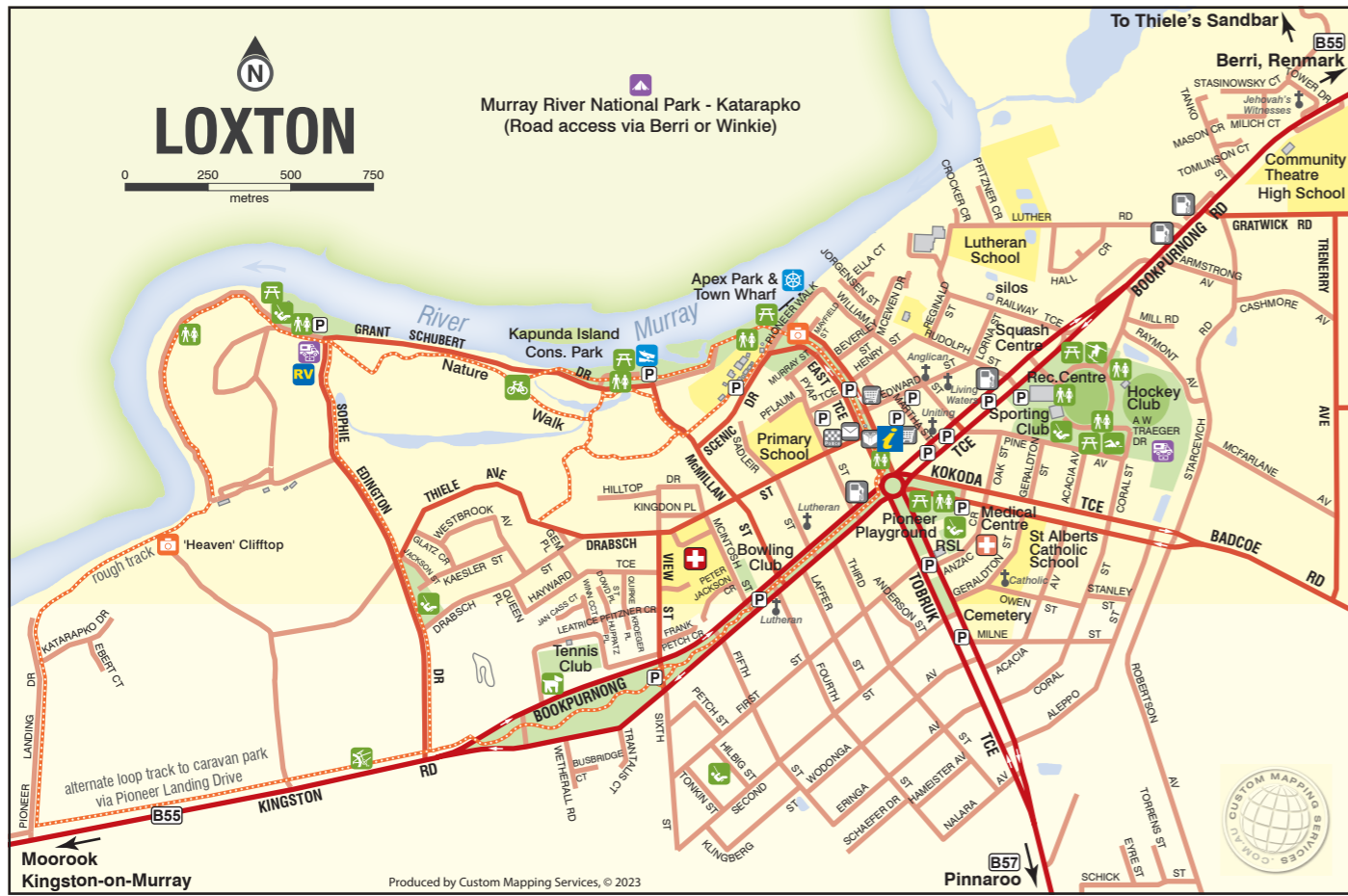


10 Crush Terrace, Waikerie  
P (08) 8541 2899  
E waikclub@riverland.net.au  
f WaikerieCommunityClubInc











# STAY

STAY ON THE RIVER, PLAY ON THE RIVER





### Barmera Lakes Resort

Come and spend time at our quality resort motel at Barmera in the Riverland, situated across from the aquatic playground of picturesque Lake Bonney. Choose from executive, family, deluxe, standard and economy rooms, many which cater for up to six people. We have a range of facilities so you can relax and have fun without even leaving the complex!

Lakeside Drive, Barmera  
 Ph: (08) 8588 2555  
 Email: [barmeralakeresort@gmail.com](mailto:barmeralakeresort@gmail.com)  
[www.barmeralakeresortmotel.com.au](http://www.barmeralakeresortmotel.com.au)



### Gilbert House

Home away from home

Gilbert House is centrally located in Berri, South Australia. This newly renovated house comfortably sleeps seven guests, features one and a half bathrooms, a study, a modern kitchen and dining area, plus reverse-cycle air-conditioning. Gilbert House is fully self-contained making it suitable for short and longer-term stays.

4 Gilbert Street, Berri  
 Mob: 0408 812 504  
 Find us on Airbnb



### Loxton Courthouse Apartments

Offering luxurious, self-catering accommodation

Whether you're travelling through or staying a while, we accommodate all guests to enjoy a cosy night's stay. All apartments have off-street parking, keyless entry, free unlimited Wi-Fi and look out onto beautifully landscaped gardens. Situated right in the heart of town. Book your stay today.

45 Bookpurnong Terrace, Loxton  
 Mob: 0499 850 833  
 Email: [admin@loxtoncourthouseapartments.com.au](mailto:admin@loxtoncourthouseapartments.com.au)  
[www.loxtoncourthouseapartments.com.au](http://www.loxtoncourthouseapartments.com.au)



The Frames – Montage Retreat, Paringa

### Luxury in the Riverland

The past 10 years has seen a growth in the number of operators offering luxury escapes. **Pike River Villas** in Lyrup has five self-contained eco-villas in a striking yet sensitive build on 15 private acres.

All enjoy river views and feature elegant, bespoke interiors and in-deck spas.

**The Frames** in Paringa is a tourism Hall of Fame winner for its three super-luxe, statement structures set on a cliff-top.

The property has a menu of luxury experiences for guests. **The Villas** in Waikerie is a series of urban-chic villas accommodating two to 12 guests.

They're located between vineyards and the fairways of the Waikerie Golf Course; complimentary golf and continental breakfast are included in all bookings.

**River Hamptons** offers an elegant retreat complete with private pool and tennis courts. It sleeps up to 12 guests across two dwellings, the main Homestead and the Barn.

### Time capsules

The Riverland's many historic homes offer a slice of yesteryear elegance and amazing views. Try **Crossfield Cottage**, Barmera (a 1920s cottage surrounded by vineyards and orchards); **The River Block**, Bookpurnong (a stunning stone homestead on a quiet lagoon); or **The River Vista**, near Monash (a spectacular cliff-top retreat that used to be a radio station!).

### Hotels, motels and holiday houses

There's accommodation to suit all budgets in all the larger towns and right along the river. Most of the major hotels (pubs) in the region have beds for the night: check out **Berri Hotel's** new **Riverview Villas**; you'll also find comfortable hotel accommodation at Waikerie, Renmark and Loxton.

After catering to travellers for decades, the region is well-provided with budget motels; there's also a huge portfolio of cottages, holiday rentals, B&Bs and shacks – no small number of them enjoying river frontage. Good times guaranteed!

### Moored: rooms with a difference

For a riverside retreat with a difference, try a permanently moored boat or houseboat. **The Murray River Queen** is one of the oldest and largest paddleboats on the Murray and offers 11 rooms over three decks. **Moving Waters** and **The Murray Dream** are contemporary designed houseboats moored in Renmark. Gorgeous **PS Julie Fay** is a two-person moored paddleboat near Paringa.

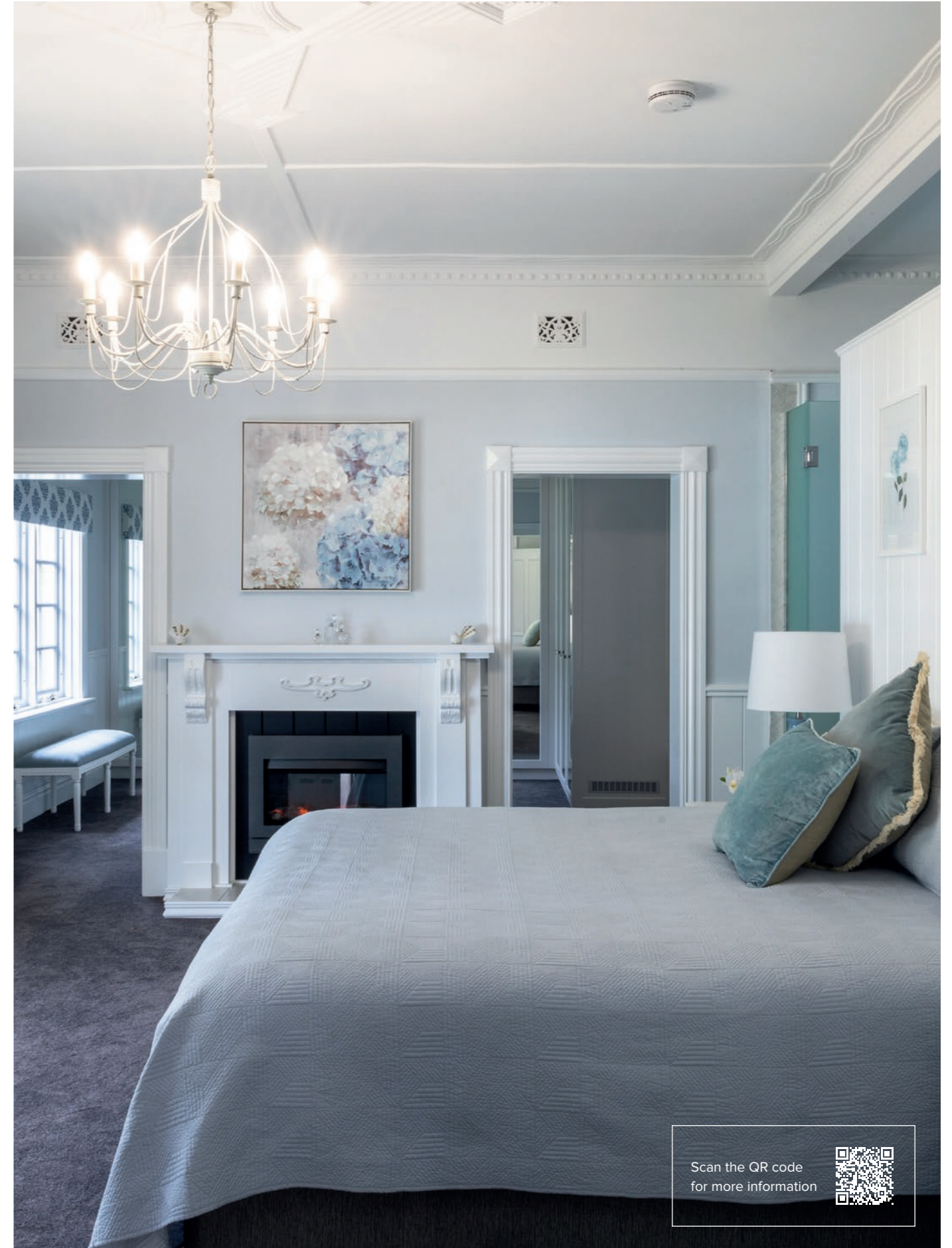
### Hire a houseboat

Houseboats offer the ultimate freedom to explore and indulge in the Riverland. You might be piloting a top-of-the-range floating mansion or a humble houseboat for two – regardless, the Murray's sweetest pleasures are just the same!

Houseboat hire is surprisingly straightforward: whether you're hiring for two days or two weeks, you don't need a boating licence. There are some rules of navigation and some basic etiquette to follow, which you'll learn about before you set off. After that, it's all yours.

Houseboats are generally equipped not unlike a small apartment (usually with a kitchenette and TV at their most basic), but more luxury fit-outs see houseboats equipped with all mod-cons, including spas, coffee machines and dishwashers.

Large hiring companies include **Riverfun Houseboats**, **River Murray Houseboats** and **Renmark Houseboats** (Renmark/ Paringa); hire companies also operate in Waikerie, Morgan and Blanchetown.



River Hamptons, Berri

Scan the QR code for more information





Lake Bonney, Barmera

## RV PARKS, CARAVAN PARKS & CAMPGROUNDS

When it comes to parking up or pitching a tent, it doesn't get better than The Riverland. We're blessed with acres and acres of river frontage and have a long (and proud!) association with those who love to travel light and linger longer.

Most of the towns, big and small, have caravan parks, RV parks and campgrounds.

In the larger towns, caravan parks feature powered sites, tent sites and cabins. Some of the more sophisticated offer the like of swimming pools, canoe hire, mini golf and 'splash parks'.

There's no shortage of more remote camp sites along the river. The majority of them are in the National Parks and reserves, occupying stunning and often secluded places of natural beauty. There is also free camping available in the Riverland!

### A few things to bear in mind...

It's always best to book ahead! Your best point of contact – for information and bookings – is a Riverland Visitor Information Centre (see Towns section for details). Of course, you can book your stay at a caravan park online or give them a call directly.

Our national parks are beautifully kept, some have facilities available

and they can be easily booked ahead with National Parks SA.

River levels in late 2022/early 2023 affected several campgrounds and caused temporary closures. By mid-2023, most of these had reopened but again, it can really pay to visit or call through to a Visitor Information Centre.

### For a full list of local facilities

These websites have updated lists of parks and campgrounds.



Berri Barmera Council



District Council of Loxton Waikerie



Mid Murray Council



Renmark Paringa Council



National Parks

### GUIDED TOURS

Explore the meandering Murray River with award-winning eco-tourism company, **Murray River Trails**. Discover the region's rich Aboriginal culture, wetlands, wildlife and forests on one of the region's many multi-day guided tours.

See advertisement page 13

### FRESH AND LOCAL

You'll find quality dried fruit, nuts, yiros and pizzas at **Riverland Sunfresh**, the Renmark-based family business stocking and serving local goods. Pop past early for a coffee and freshly made Greek pastry.

See advertisement page 22



### Renmark Holiday Apartments

Four star apartments

Offering luxurious living, well priced and perfectly located apartments, in the heart of Renmark, near the picturesque banks of the Murray River. Short walking distance from the Renmark shopping centre and tourist attractions. Your home away from home. Everything you need for the perfect vacation.






161 Murray Avenue, Renmark  
 Email: [enquiry@renmarkholidayapartments.com.au](mailto:enquiry@renmarkholidayapartments.com.au)  
[www.renmarkholidayapartments.com.au](http://www.renmarkholidayapartments.com.au)



### Riverbend Caravan Park

A traditional holiday with an iconic backdrop!

Experience bush camping in the iconic backdrop of Australian getaways at Riverbend Caravan Park, Renmark. Situated right on the banks of the Murray River, you'll find yourself in a picturesque park where you can sit back and take in the natural beauty, wildlife and relaxing quiet of a traditional park holiday.

101 Sturt Highway, Renmark  
 Ph: (08) 8595 5131  
 Email: [stay@riverbendrenmark.com.au](mailto:stay@riverbendrenmark.com.au)  
[www.riverbendrenmark.com.au](http://www.riverbendrenmark.com.au)


Discovery Parks  
LAKE BONNEY, SA



# The river is waiting...



BOOK NOW





## BIG4 Loxton Riverfront Holiday Park

Located just a short 1.8 kilometre walk, ride or drive from the central township of Loxton.

Enjoy the unique riverfront views from Executive cabins, powered or unpowered sites.

Showcasing our exclusive Glamping Tents, directly overlooking the river.

Offering pet-friendly cabins and ensuite sites located centrally within the park.

After being affected by the 2022-23 floods, the park's ongoing rehabilitation embraces the welcoming back of native flora and fauna.

With plenty of spacious sites and a friendly atmosphere, this park invites you to enjoy the natural serenity.



*Whether you plan to sit back and unwind or get active with the many surrounding walking trails, this park has something for everyone.*

Like us on Facebook



**BIG4**  
HOLIDAY PARKS

**Loxton**  
Riverfront  
Holiday Park

1 Sophie Edington Drive, Loxton  
p (08) 8584 7862 e [info@loxtonholidayparks.com.au](mailto:info@loxtonholidayparks.com.au)  
w [big4.com.au/caravan-parks/sa/riverland/loxton-riverfront-holiday-park](http://big4.com.au/caravan-parks/sa/riverland/loxton-riverfront-holiday-park)



### Roonka Riverfront Homestead and Cottages

*The perfect location for a family holiday*

Roonka Homestead offers four large bedrooms, two bathrooms, sleeping up to 16. There is an inside and outdoor kitchen and huge verandah overlooking the river only 40 metres away. Enjoy large open lawns along the riverbank. There is also a boat ramp, swimming/ski area and a spot for a campfire.

Murraylands Road, Blanchetown  
Mob: 0418 849 054  
Email: [roonka@adam.com.au](mailto:roonka@adam.com.au)  
[www.roonkahomestead.com.au](http://www.roonkahomestead.com.au)



**ROONKA**  
HOMESTEAD



### Waikerie Holiday Park

*A sun chasers must-stay holiday park!*

Relax and enjoy your holiday in the full sun at Waikerie Holiday Park. With open park views and its proximity to the Murray River, you'll love spending all year round here, exploring this warm destination that'll have you coming back again and again.

44 Peake Terrace, Waikerie  
Ph: (08) 8541 2651  
Email: [stay@waikerieholidaypark.com.au](mailto:stay@waikerieholidaypark.com.au)  
[www.waikerieholidaypark.com.au](http://www.waikerieholidaypark.com.au)



### Wigley Retreat

Your passport to secluded boutique accommodation and stylish country-style hospitality is Wigley Retreat at Wigley Flat in the beautiful Riverland. It's the perfect environment to enjoy a special occasion or romantic escape with the mighty Murray River right on your doorstep. Enjoy a few languid days of regional discovery, relaxation, revitalisation and much more.

172 Wigley Flat Road, Wigley Flat  
Mob: 0417 186 364  
Email: [wigleyretreat@gmail.com](mailto:wigleyretreat@gmail.com)  
[www.wigleyretreat.com.au](http://www.wigleyretreat.com.au)



# The Riverland's most expansive holiday park right on the river at Berri

Choose from a large range of accommodation options over 100 sites, and activities galore!



Group stay accommodation, luxury three bedroom apartments, superior three bedroom cabins, ensuite and powered sites, world-class mini golf course and the choice of three pools to cater for all.

87 Riverview Drive, Berri  
P: (08) 8582 3723

E: [info@berriholidaypark.com.au](mailto:info@berriholidaypark.com.au)  
[www.berriholidaypark.com.au](http://www.berriholidaypark.com.au)



**Berri Riverside**  
Holiday Park



**TAKE YOUR CHOICE OF THE QUEEN SHARE ROOMS OR THE FAMILY ROOM**

**ALL ROOMS CONSIST OF:** PRIVATE ENSUITE • MICROWAVE • TOASTER • KETTLE  
 IRON/IRONING BOARD • FULL SIZE FRIDGE • CROCKERY AND CUTLERY • FLAT SCREEN TV  
 COFFEE AND TEA MAKING FACILITIES • FREE WI-FI • FREE BARBECUE FOR GUESTS

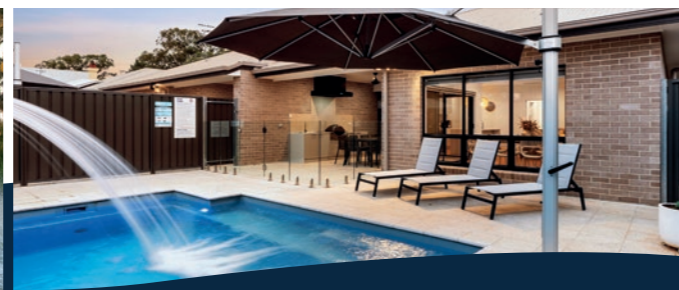


**1 FEDERAL STREET, MORGAN • (08) 8540 2277 • OFFICE@MORGANMOTEL.COM.AU  
 WWW.MORGANMOTEL.COM.AU**



## HOLIDAY BY THE MURRAY RIVER

CHOOSE FROM OUR HOUSEBOATS OR VILLAS



Located a five-minute walk from the Renmark township, Boats and Bedzzz offer two houseboats (9 and 10-berth) for moored accommodation on the river. Fully self-contained, linen and two-person kayak provided. The adjacent Renmark River Villas offer four luxury villas able to accommodate up to 8-10 people in each with off-street parking for vehicles and boats. Three villas each have their own private heated pool.



James Avenue, Renmark | 0429 865 749 | boatsandbedzzz.com.au



# Riverland Wine Centre

## BEST OF THE RIVERLAND IN ONE PLACE

Hosting over 25 different Riverland wineries, the Wine Centre's interactive storyboards take you through the journey of each winery and help whet your appetite to both taste and discover just a little more.

The Riverland is awash with an array of wonderful people, products and places to experience – we look forward to sharing our passion for the region with you and helping you explore all that the Riverland has to offer.

8 Pike Creek Rd, Lyrup | M 0428 831 045  
 E hello@riverlandwinecentre.com.au  
 W riverlandwinecentre.com.au

# PIKE RIVER VILLAS

*Your Special Space in the Heart of South Australia*

From the moment you step into Pike River's Villas the majestic views and your indulgent surroundings will lift your spirit and relax your mind.

Your fully self-contained villa will allow you the chance to rediscover the meaning of relaxation while offering you the perfect base to explore the magnificent Riverland region... If you can tear yourselves away!

8 Pike Creek Rd, Lyrup | M 0428 831 045  
 E caire@pikeriver.com.au | W pikeriver.com.au



### A PRIVATELY OWNED CAMPGROUND RIGHT ON THE BANKS OF THE MIGHTY MURRAY RIVER

You are invited to sit and do absolutely nothing other than relish the peace and quiet or enjoy a mesmerising campfire. Fish or venture onto the water and enjoy any number of water sports or take a walk or ride. If the river side is too busy, choose a quieter site on the creek or lagoon. However you and your family choose to relax and spend your time with us is entirely up to you. We are pet-friendly.



Bookings are essential  
 0427 716 560  
 cordolacr@gmail.com



## Such a beautiful place

Located on the banks of the beautiful Murray River, Morgan Riverside Caravan Park is the ideal destination for all holiday makers.

Providing on-site budget conscious accommodation, standard pet-friendly cabins, drive-through sites, grassed powered and unpowered sites, and luxurious ensuite cabins.

Enjoy fishing, canoeing, water skiing, bird watching, swimming, mini golfing, or just pure relaxation.

Our kiosk is always well stocked with a range of items such as bait, ice cream and confectionary. We are also pet-friendly. Tinny hire available.



92 South West Terrace, Morgan

P (08) 8540 2207 W [morganriversidecaravanpark.com.au](http://morganriversidecaravanpark.com.au)

### WALK THROUGH HISTORY

Step back in time at the **Loxton Historical Village**. More than 40 buildings and exhibitions preserve the Loxton, Riverland and Mallee District past from 1870 to 1950, documenting the region's pioneering stories and settler history.

See advertisement page 62

### BASE CAMP

Thirty motel units, all mod-cons, private balconies with river, garden or pool views, off-street parking. Twenty-one hotel rooms, six spectacular seven-day food and beverage zones, sparkling under-shade pool. **Loxton Hotel**, the perfect base for Riverland breaks.

See advertisement page 35



### Riverbush Holiday Cottages

Located on 37 acres of private, riverside land, River Bush Cottages is the perfect family/group short-stay or long-term worker accommodation. Nestled amongst nature in Spring Cart Gully, the property features four cottages with three bedrooms each, all with full-size kitchens, bathrooms and laundries. Five minutes from Berri and 10 minutes from Renmark. Pet-friendly. Private riverfront and boat ramp.

1618 Old Sturt Highway, Berri **RIVERBUSH**  
 Mob: 0484 187 772  
 Email: [stay@riverbush.com.au](mailto:stay@riverbush.com.au)  
[www.riverbush.com.au](http://www.riverbush.com.au)



### ENDLESS TRANQUILLITY

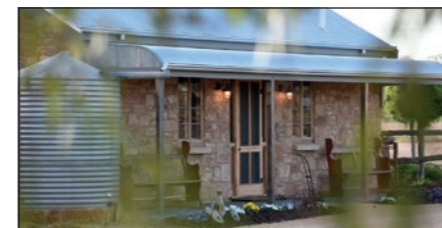
A holiday exploring the historic **Mid Murray Region** is a must. Soak up the tranquil Riverland scenery, enjoy our hospitality, canoe our backwaters, take nature walks, play, fish, cruise or just relax.

See advertisement page 11

### COUNTRY CLASSIC

Savour hearty pub grub in our quaint country hotel, **Brown's Well Tavern!** Featuring sizzling steaks, irresistible burgers, fish and chips or a burger platter. Swing by **Paruna General Store** for your grocery essentials and a fresh cup of coffee.

See advertisement page 36



### Riverline Cottage and Gardens

Enjoy the serenity and seclusion of this gorgeous replica stone cottage set in stunning private gardens. It is rustic, charming and fully self-contained, and perfectly suited to an indulgent weekend away in the Riverland. Relax, recharge and unwind with a complimentary cheese platter and wine on arrival. Generous breakfast provisions and bicycles to explore the local area at your leisure.

141 Karoonda Highway, Loxton  
 Mob: 0414 922 269  
 Email: [info@riverlinecottage.com.au](mailto:info@riverlinecottage.com.au)  
 Bookings: [www.riverlinecottage.com.au](http://www.riverlinecottage.com.au)



# Waikerie HOTEL MOTEL

## FAMILY ACCOMMODATION

(ON AND OFF-SITE)

Situated just off the Sturt Highway (off-site), just one kilometre from the main hotel premises in Waikerie, our off-site motel accommodation is perfect for larger travelling groups and families.

Complete with family rooms and upgraded cabins, self-sufficient facilities, ample parking all just a short drive from our main hotel's destination restaurant and bar facilities.

[www.waikeriehotel.com](http://www.waikeriehotel.com) | (08) 8541 2999

WAIKERIE CELLARS

2022 GOLD LIST

Accommodation Excellence, COVID Safe, Green Star, 5 Stars, Facebook, Instagram



Absolute Waterfront Accommodation  
 "You can't get much closer!"



A unique location for families and groups offering an exclusive waterfront experience.

Choose from two self-contained cottages (sleeping 6 and 8) each with a private jetty OR Mundic Homestead, a beautiful character-filled home with water views (sleeping up to 14) set amongst a working vineyard.

Each property is surrounded by large gardens and has modern facilities and outdoor entertaining areas. Enjoy water sports such as skiing (boat ramp on site) and fishing, or hire a canoe to explore the magnificent waterways.

Enjoy the serenity just minutes from restaurants and shops.

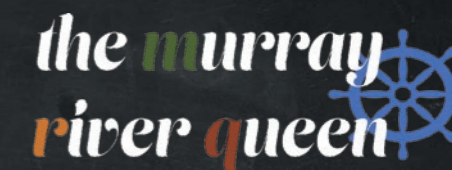
21054 Sturt Highway, Paringa M: 0429 693 706 E: [bookings@mundic.com.au](mailto:bookings@mundic.com.au) W: [www.mundic.com.au](http://www.mundic.com.au)

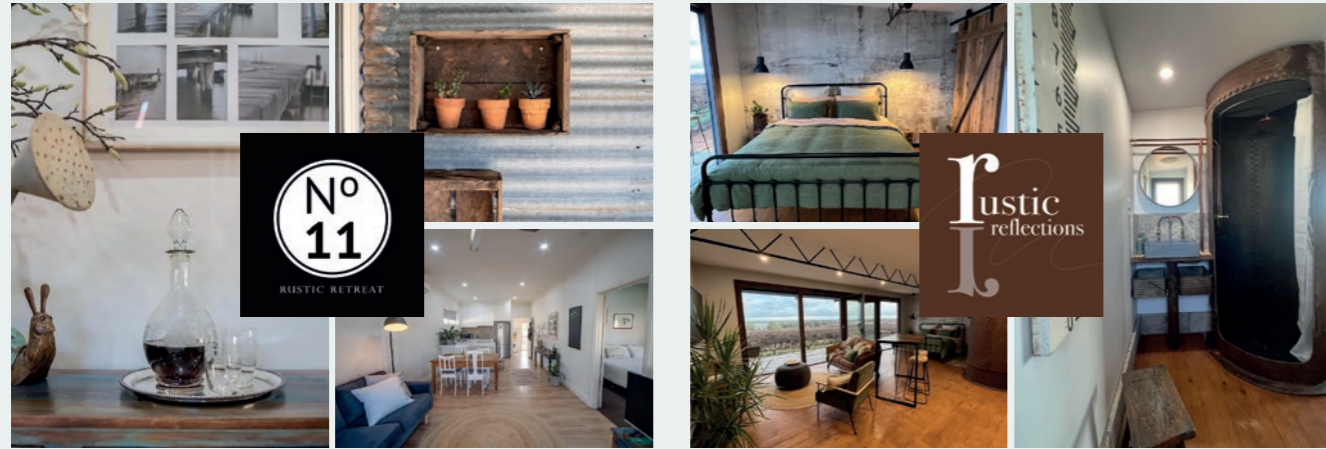


### The Riverland's most unique and historic waterfront accommodation

Relax, unwind and wake up to stunning views on The Murray River Queen - from your room or one of the leisure decks, the views are spectacular. Coming to the river is a great way to relax and unwind and our rooms and suites are fully equipped with everything you need to enjoy your holiday in comfort and style.

[THEMURRAYRIVERQUEEN.COM.AU](http://THEMURRAYRIVERQUEEN.COM.AU) • 08 8541 4411 • [INFO@THEMURRAYRIVERQUEEN.COM.AU](mailto:INFO@THEMURRAYRIVERQUEEN.COM.AU)

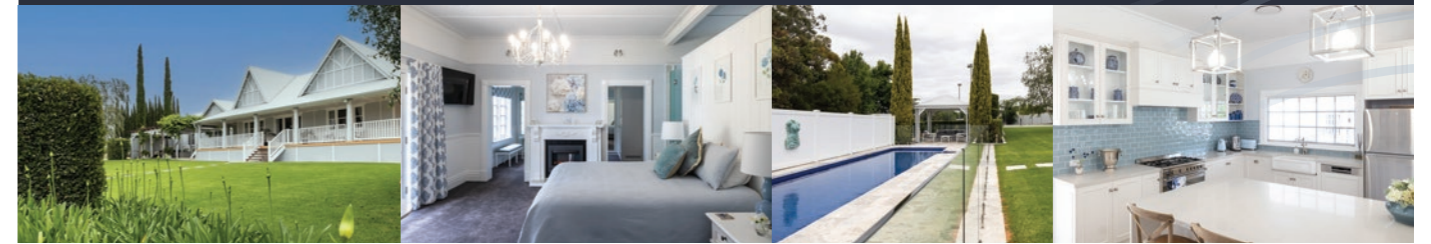




**No 11 Rustic Retreat** 11 Pascoe Terrace, Barmera / **Rustic Reflections** 46 Anderson Road, Cobdogla  
 e riverscape1@bigpond.com / m 0429 350 456 / f i a

**RIVER HAMPTONS**  
 ESCAPE · INDULGE · RELAX

riverhamptons.com.au



In the heart of the Riverland, amongst the red dirt and gums that line the Murray is the River Hamptons.

Sleeps up to 12 guests across two dwellings – the main Homestead and the Barn.

Classic Hamptons style

Swimming pool, tennis court and alfresco areas

Luxurious living spaces

enquiries@riverhamptons.com.au 23 Fenwick Road, Berri 5343 riverhamptonsberri @riverhamptons



**The River Block**

The River Block is not just somewhere to stay. It is a place to immerse yourself in the sheer beauty and history that surrounds you. Nestled on 14 acres, between Berri and Loxton, you are in a wonderful position to visit the region's many must-see places! Sleeping up to six, the 1919 home has been lovingly restored to provide

a sense of place, allowing you to relax in the creature comforts. The sounds of nearby birdlife, trickling waterways, and endless walking trails to explore, make The River Block a destination – not just a place to rest your head but one where you will find yourself creating memories over and over.

184 Nitschke Road, Bookpurnong  
 Mob: 0409 292 355  
 Email: hello@theriverblock.com.au  
 www.theriverblock.com.au



**Roonka River Adventure Park**

Water and land-based activities  
 Private bunk rooms | Bell tent hire  
 Powered & unpowered campsites  
 Boat launch | Kayak & canoe hire  
 Kitchen and bathroom facilities  
 Full private site hire available  
 Pets on lead welcome!

PRE-BOOKINGS ESSENTIAL  
 www.roonka.org.au | (08) 8339 3333  
 Blanchetown - just 1 hour 40 mins from Adelaide

**RENMARK HOUSEBOATS**

**Your ultimate destination for an unforgettable river adventure.**

Nestled along the magnificent River Murray, our houseboats offer an exceptional experience.

Offering 2 to 12 berths, there's a perfect option for every group size.

Pet-friendly boats available ensuring no family member is left behind.

Hire a kayak or dinghy to explore the creeks and waterways, or visit nearby attractions such as the renowned Woolshed Brewery.

*Immerse yourself in nature as you cruise along the river taking in breathtaking views, birdlife and wildlife, and creating cherished memories.*

**Start planning your dream getaway, we look forward to welcoming you aboard!**

Liba Liba Parade, Renmark - Marina Address

Mobile: 0408 839 494 - Email: info@renmarkhouseboats.com.au  
 www.renmarkhouseboats.com.au

**THE FRAMES**  
 LUXURY IN THE RIVERLAND

If you're looking for a romantic getaway, luxury escape and to experience the Australian outback, The Frames is the perfect place. Beautifully designed for couples and built for discerning travellers, this award winning, 6-star luxury accommodation is perfectly set on the peaceful banks of the Murray River.

**TO BOOK:**  
 Call Cathy on 0418 862 260 or [theframesluxuryaccommodation.com.au](http://theframesluxuryaccommodation.com.au)

# HISTORY & CULTURE

CONNECT WITH RIVERLANDERS PAST AND PRESENT



Historical Village, Loxton

Riverlanders have the most extraordinary stories to tell. Visit these local attractions and you'll get a deeper understanding of their lives and their legacies...

### Look out from the top of Headings Cliff, Murtho

Sure, it's a sublime sight – but look a little deeper. These 20-million-year-old limestone cliffs are old, uplifted seabeds that have been carved by a river flowing for 600,000 years. The uppermost layer of soils are sands that blew in 40,000 years ago, sustaining the life you see around you.

*Footnotes: Renmark River Cruises do a sunset cruise out to Headings Cliff.*

### Explore Katarapko, part of the Murray River National Park

This is the homeland of Erawirung People, the First People who have lived on the abundant floodplains of the Murray River for many thousands of years. The Ngarrindjeri (traditional owners of the lower Murray and Lake areas) share creation stories of how Pondi – the giant Murray cod – sculpted the landforms that comprise the river. The floodplains, backwaters and forests of Katarapko (located between Berri and Loxton) are rich with fish, flora and native animals – the sort of resources that sustained Indigenous peoples before the Europeans arrived.

*Footnotes: Shara Coulthard is a ranger working for National Parks & Wildlife in the Riverland.*

### Visit the Wilkadene Woolshed Brewery

The popular brewery has its origins in the old 1859 cottage made of locally quarried limestone. It was the head station of the 'Murtho run' – a pastoral lease

acquired by Edward Bagot, where he ran cattle and then sheep. Though suffering cycles of boom and bust, pastoralists stimulated economic growth in fledgling towns and later supported rail and river transport hubs.

*Footnotes: The present brewery has been fashioned from 100-year-old shearing sheds on the banks of the river, with original sheep pens still visible. An evocative place to enjoy a beer.*

### Visit the Morgan Landseer Museum in Morgan

After the mid-1800s, the Murray River became a bustling highway for river trade. Morgan ended up as both a port town and a railhead – a place for goods to be offloaded from paddle-steamers and then freighted by steam train to Port Adelaide. By the 1880s, it was the busiest river port in South Australia.

*Footnotes: The Landseer Museum is a lovely stone agent's building housing historic displays. And if you want to experience a real paddlesteamer, the PS Industry (built 1910) has her boiler stoked and paddles turned once a month for short cruises out of Renmark.*

### Go back in time at the Loxton Historic Village

With more than 45 recreated buildings and exhibits on the banks of the Murray, the Village invites visitors to see how Riverland families lived from the 1870s through to the 1950s. See the chapel school, shops, bank, railway station, bakery, telephone exchange and an irrigated fruit block – the precursors of what you see in the Riverland today.

*Footnotes: 'Alive Days' see volunteer Riverlanders dressed and working just as their forebears did!*

## CULTURAL ATTRACTIONS

**The Rain Moth Gallery (Waikerie):** See locally produced arts, crafts, jewellery, glassware and more.

**Storytowns:** Download the app for interactive, geo-located podcast tours; take a history tour in Loxton, an arts tour in Waikerie or a driving tour between the two.

**Silo Art:** Look up! You'll find stellar silo art in the towns of Paringa and Waikerie; the Berri Bridge mural depicts Indigenous dreaming stories.

**Riverglen View Art Studio (near Waikerie):** Make an appointment to visit the lovely cliff top studio of artists Clint and Liz Frankel to see their glass works and canvases.

**The Chaffey Theatre (Renmark):** Look out for regular exhibitions and performances.

**Bonney Theatre (Barmera):** This art deco showpiece was constructed in 1938. The Barmera Theatre Gallery showing work by local artists, is located within.


**Loveday Internment Collection (Barmera Visitor Centre):** Marvel at the stories of Australian residents imprisoned in the nation's largest internment camp during the World War II.

**Renmark Paringa Community Museum:** This outdoor museum features a huge range of farm equipment and agricultural implements in a riverside setting. There's a similar display at Waikerie & Districts Machinery Preservation Society.

**Waikerie RSL Military Museum:** A gold coin donation will have you inspecting the military collection. All welcome – and the RSL has a bar!

**Olivewood Historic Homestead and Museum (Renmark):** This stunning National Trust Property was home of the Riverland pioneer, Charles Chaffey. Built in the 1880s it has a spectacular palm-lined drive.

Scan the QR code to enjoy Shara Coulthard's itinerary for Murray River National Park (Katarapko)





### DRIED FRUIT GOODNESS

Indulge in locally grown dried apricots from **QuirkeyCots**, the third-generation Riverland fruit farmers based in Loxton. Be sure to try their Quirkeychocs – dried apricot chews in premium milk and dark chocolate.

See advertisement page 36

### RIVERFRONT EXCELLENCE

Park the caravan along the majestic Murray River at **BIG4 Loxton Riverfront Holiday Park**. The BIG4 site is spacious and lush, featuring cabins, powered camping sites, barbecue facilities and stunning river views.

See advertisement page 52



### Olivewood Historic Homestead and Museum

The original homestead of Charles Chaffey built in 1889 is now a museum surrounded by expansive gardens, Heritage-listed Olive Grove, and Washingtonia Palm Drive.

The Chaffey Brothers established the first irrigation systems in Australia at Renmark and Mildura. There is also the Charles Chaffey Centre,

a packing shed, The Argo Barge, and other displays showcasing the development of Renmark.

We are pet-friendly. There is a three bedroom 'Caretaker's Cottage' on-site that can accommodate six guests – queen, double and two single beds.

Olivewood is open Thursday to Monday from 10am to 4pm, or by appointment for groups.

Corner Renmark Avenue  
and Twenty-First Street, Renmark  
Ph: (08) 8586 6175  
Email: [olivewood.renmark@gmail.com](mailto:olivewood.renmark@gmail.com)



### Loveday Internment Collection and Display

Come and learn about this unique part of regional wartime history with an audio visual display including original colour footage and a collection of memorabilia. An internment camp housed international residents who they thought were a threat to Australia during the war. A very important part of Barmera's history. Housed in the Barmera Visitor Information Centre.

Barwell Avenue, Barmera  
Ph: (08) 8588 2289  
Email: [vic@barmeratourism.com.au](mailto:vic@barmeratourism.com.au)  
[www.barmeratourism.com.au](http://www.barmeratourism.com.au)



### Rocky's Hall of Fame and Pioneer Museum

Two museums in one!

Find out about the history of both Australian country music and local pioneers. Rocky's features the 35-metre-long big guitar and more than 190 hands of fame inductees while the Pioneer Museum showcases local history including Donald Campbell's K7 water speed record. Please check Facebook for current times and private viewing options. Entry is \$2 per person.

1 Fowles Street, Barmera  
Ph: (08) 8588 2289  
[www.berribarmera.sa.gov.au](http://www.berribarmera.sa.gov.au)



### "The Pines" Loxton's Historic House and Garden

Built in 1909, this beautifully preserved sandstone villa was bequeathed to the people of Loxton in 2002 by Mrs Ella Kingdon. The homestead houses a collection of family possessions and historical artefacts. The vast gardens are open daily to the public and guided tours of the homestead are conducted every Sunday at 2pm.

18 Henry Street, Loxton  
Tours: 0421 601 903 or 0417 863 091  
Events: 0412 649 766  
[www.thepinesloxton.com](http://www.thepinesloxton.com)



LOXTON HISTORICAL VILLAGE

~ Celebrating 50 years ~

**OPEN 6 DAYS**  
Tuesday - Sunday  
10am - 4pm  
Public holidays & by appointment

CLOSED Good Friday, Christmas Eve & Christmas Day

Be inspired by the lifestyle of our rural settlers

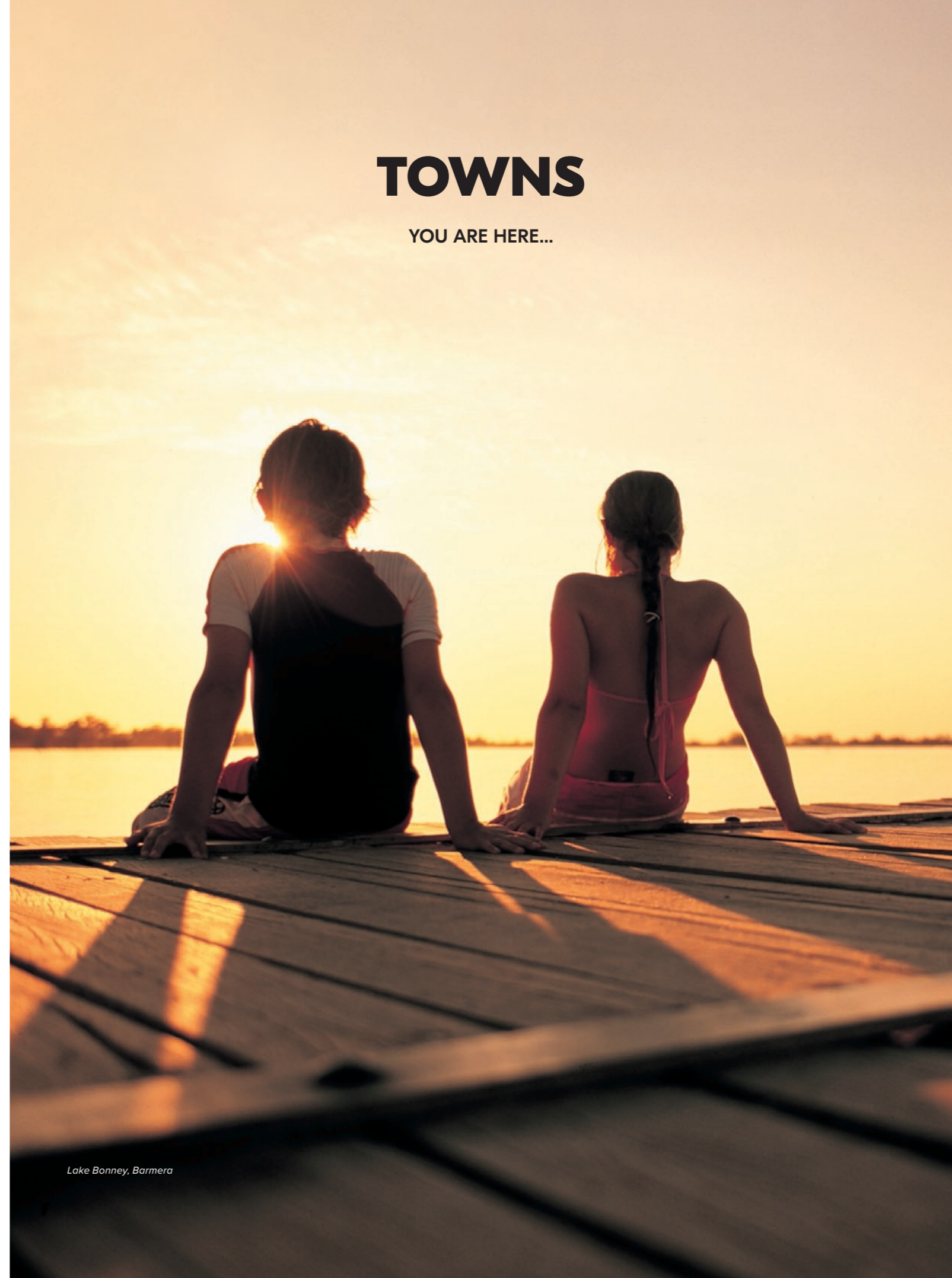
The stories of the early settlers & their families are displayed in over 45 buildings and their exhibits, each fully furnished with fascinating displays & memorabilia.

Enquire about our Educational programs for schools, Complex hire & Membership (with 12mths unlimited entry)

[www.thevillageloxton.com.au](http://www.thevillageloxton.com.au) 08 8584 7194

# TOWNS

YOU ARE HERE...



Lake Bonney, Barmera

## BARMERA

The name **Barmera** comes from the Aboriginal word 'Barmeedjie' meaning 'lake'. The lake itself was named after Charles Bonney who saw it on the first overland trek from Sydney to Adelaide in 1838.

**Lake Bonney** is popular with yachting enthusiasts, water skiers, windsurfers, paddleboarders and kite-surfers, and has excellent safe swimming areas for the family. Canoeists and boaters enjoy superb fishing and sightseeing. Outdoor lovers also enjoy the beautiful **Barmera Golf Course**, a **skate park** adjacent to the lake and the **Barmera Playspace**. Not surprisingly, **Discovery Parks' Lake Bonney** caravan park, with its host of fun-filled facilities, is huge with families.

The **Bonney Theatre** on Barmera's main street has a fine art deco façade. On selected nights, the theatre lights up as the Riverland's only permanent outdoor projection site, screening beautiful digital works from sundown.

Visitors can get a country music fix throughout the year by visiting **Rocky's Country Music Hall of Fame**. Don't miss the 'Big Guitar' and the 'Hands of Fame', displaying the handprints of famous C&W artists.

Located on the north side of Lake Bonney, **Napper's Ruins** was once the Lake Bonney Hotel, built for former workers of Cobdogla Station. An interesting place to visit, it has interpretive signage.

In 1964, Barmera received notoriety when Donald Campbell and his dedicated team attempted to break the World Water Speed Record in *The Bluebird*. Campbell reached speeds of up to 347.5 kilometres per hour on Lake Bonney.

Discover more about Barmera's history and its charming between-war architecture on the **Barmera Heritage Walk**. Visit the Barmera Visitor Information Centre for details.

Throughout the year, the town comes alive for many festivals and events including the **Barmera Markets**, **SA Carp Frenzy**, **SA Sheep Dog Trials**, **Riverland Field Days** and the **Murray Man Triathlons**.



## BERRI

Start with the perfect overview by climbing to the top of the Berri Lookout Tower: The 15.8-metre water tower has been repurposed and furnished with 97 steps to provide a 360-degree view of the town!

Berri is not only one of the Riverland's most productive heartlands, it enjoys a beautiful riverfront location and is a gateway to the **Murray River National Park**. The town takes its name from the Aboriginal word 'bery bery' meaning 'bend in the river' and was proclaimed in 1911.

Immerse yourself in the unique river environment with a number of walking trails within minutes of the town centre including the **Martin Bend Wetland Walk**, **Murray River National Park (Katarapko)** and the **Wilabalangaloo** nature trail. For a stunning on-water experience, join **Canoe Adventures Riverland**, one of the best ways to witness the magic of the river. Katarapko, part of the Murray River National Park, is on Berri's doorstep and provides a beautiful location for fishing, boating, birdwatching, kayaking, walking and cycling.

Tee off at **Berri's golf course**, enjoy a spot of fishing or, if you're feeling adventurous, hit the Murray for waterskiing or wakeboarding.

The town provides a great selection of shops and the magnificent **riverfront** offers plenty of green spaces for barbecues, picnics and recreation. It's also the starting point for **Berri's Heritage and Art Walks** and home to the **Berri Visitor Information Centre**, where you'll find a fabulous range of local products. Inspect the **mural** under Berri's bridge that depicts the Aboriginal heritage of the area and visit the installation that stands in tribute to Australia's famous Aboriginal tracker, **Jimmy James**.

Berri has a range of cafés and restaurants. **River Jacks Café** offers one of the best water views in the Riverland (as well as a host of home-cooked delights) and the **Berri Hotel** boasts a gorgeous riverfront position. Berri is also close to a variety of wineries and local produce stalls to round out your experience.



## BLANCHETOWN

This relaxed holiday town is nestled on the cliffs of the Murray and features two bridges spanning the river. It's made up of river shacks and uncrowded stretches of calm water ideal for activities all year round.

Learn about Blanchetown's involvement in the lock and weir system or visit **Brookfield Conservation Park**, a breeding ground for the southern hairy-nosed wombats that graze on the western side of the river. At the end of the day, drop into the **Blanchetown Hotel** for a drink on the deck overlooking Lock 1.

As you cross the Murray on the Sturt Highway, be amazed by the breadth of the Murray River, bordered by spectacular creamy limestone cliffs more than 20 million years old. The old bridge provides a superb viewing area for the fleets of pelicans gathered below the lock, waiting for their catch.

Sample wine at **Burk Salter Cellar Door** or hop on board their immaculately restored **1927 Chevrolet Truck** for a private tour of the vineyard and adjoining wetland area.

**Griffens Marina** is home to a range of luxury houseboats for hire; in years gone by it was a popular mooring spot for paddle steamers. The **PS Pyap** built in 1896 would regularly tie up at the riverbank to sell goods from further upstream. You can still see the word 'Pyap' engraved on the old river red gum next to the hire boats.

Blanchetown has some fantastic riverfront holiday homes for hire and **River Shack Rentals** manage some of the best.

## CADELL

A rich citrus-growing area near Morgan, the town of **Cadell** was named after Captain Francis Cadell, the first Riverboat Captain to navigate the Murray River in 1853. It features one of the most amazing natural limestone cliff amphitheatres overlooking the Murray River, as well as accessible wetlands and significant native plant life.

'Twitchers' love Cadell for its bird hides, while international botanists are drawn to the unique varieties of prickly bottlebrush. The trail through the wetlands is marked with informative signs about the birdlife and the ecosystem.

Houseboaters and visitors can enjoy the riverfront lawned area with majestic river cliffs as a backdrop – the perfect place for a lazy riverside picnic. There's also a playground, barbecues and camping facilities available.

The **Cadell Club** is where you'll enjoy country hospitality – and the best fish and chips you've ever tasted! Campers, RVs and caravanners are welcome at the oval; and be sure to visit the **Cadell Historic Interpretative Centre**.

Cadell is home to the annual **Cadell Harvest Festival** on Easter Saturday which features quirky events such as cockroach racing, the hay bale Easter Egg Hunt and the famous **Giant Pumpkin Competition**.

## COBDOGLA

It's a tongue-twister, but the small town of Cobdogla (an Aboriginal word meaning 'land of plenty') is also home to historical treasures.

**Cobdogla** is a small irrigation settlement about five kilometres west of Barmera. It's home to the



### Barmera Markets

The award-winning Barmera Markets cater for the whole family. The markets comprise a large variety of stalls including clothing, craft, jewellery, woodwork, artwork, homewares, plants, condiments, and local produce. Enjoy meeting the locals and enjoy a variety of foods and great coffees. Join in the entertainment or exhibitions which may include motorbikes, cars, petting zoos, or live music.

Barwell Avenue, Barmera  
Ph: (08) 8588 2289  
Email: vic@barmeratourism.com.au  
www.barmeratourism.com.au



### Barmera Playspace

*A kid's paradise!*

Overlooking Lake Bonney this playspace has plenty of imaginative play equipment to keep the children (and adults) happy for hours on end. With barbecues and shelters, this is an ideal space for families to enjoy a day out. Walk across the road to Lake Bonney and cool off with a swim on a hot day – the wave-free beach makes it ideal for children.

Nookamka Terrace, Barmera  
Ph: (08) 8588 2289  
www.berribarmera.sa.gov.au



### Bluebird Delights and Gift Boxes

*The perfect little treat!*

A local business offering a range of unique and delicious 'treats' using mainly local dried fruit and nuts. Handcrafted with love, our choc dipped fruit, chocolate creations, dehydrated range, and nut selection has something for everyone! Indulge in our ever-changing range of individually packed products or create a personalised BYRD box for someone special.

115 Darling Street, Renmark  
Mob: 0408 845 672  
Email: birdhouse@bluebirddelights.au  
www.bluebirddelights.au



Scan the QR code to read online.



### Cammie's Antiques

Be charmed at Cammie's Antiques, stockists of a range of furniture and collectables including china, books, radios, kitchenalia, tools and gardenalia, petronalia, enamel signs, toys and prams, restoration products, handles and knobs, jams, and soaps. Also, stockists of Annie Sloan Chalk Paint. Located on the Sturt Highway at Paringa and open seven days, 9am to 5pm.

16 Sturt Highway, Paringa  
Ph: (08) 8595 5400  
Email: antiques@cammies.com.au  
www.cammiesantiques.com.au



### Lion Allan Thurmer Recreational Trail

A short distance from the centre of Berri, this 2.8 kilometre loop of the local wetlands begins at the Berri marina and extends to Martin Bend. The trail includes five lagoons and a permanent connection to the river. An amble along this mainly flat loop takes about one hour and is a great way to appreciate the local ecosystem and diversity of flora and fauna populations.

Start Berri Marina, Riverview Drive, Berri  
Ph: (08) 8582 5511  
Email: tourism@bbc.sa.gov.au  
www.berribarmera.sa.gov.au



**AMPOL BERRI COMING SOON**

QUALITY FUEL  
HOT FOOD  
COFFEE  
CONVENIENCE ITEMS  
AUTHENTIC AMERICAN CANDY

2 WILSON STREET, BERRI, SA 5343



Banrock Station, Kingston on Murray

original pumping station that kept the district's vineyards and horticultural crops watered.

Cobdogla is now a great family getaway, with a riverfront caravan park and museum. For keen fishermen, there is also a boat ramp at Bruno Bay and some great fishing spots.

The **Cobdogla and District Club** was officially opened as a community club in 1958, eight years after the community started work on developing and funding the project. Today the spirit of the 'Cobby Club' endures and provides a family-friendly environment.

## GLOSSOP

Take the scenic drive from Berri past lush vineyards and roadside produce stalls to the town of **Glossop**, home to one of Australia's largest wineries.

The town was named after Vice Admiral J.C. Glossop, Commander of HMAS *Sydney*, the vessel that sank the German raider *Emden* in World War I. An anchor at the front of the motel stands as a memorial.

Stroll through the lavender garden of the **Lavender Café**, before enjoying a game of putt putt. The café serves delicious wood-fired pizza as well as an impressive array of authentic Italian pasta dishes.

Visit **Berri Estates Winery and Cellar Door** and marvel at the size and storage capacity of the largest single operating winery in the southern hemisphere. Part of the Accolade Wine Group, it crushes around 220,000 tonnes of grapes a year. Tours are available.

At **919 Wines'** cellar door, sample their award-winning hand-crafted wines (the vineyard is home to 21-year-old Durif and 18-year-old Touriga Nacional vines). You can also try their fortified wines for which they are developing quite a reputation.

## KINGSTON ON MURRAY & MOOROOK

Home to the iconic **Banrock Station Wine and Wetland Centre**, the Kingston on Murray and Moorook area is a pristine natural environment and one of the most popular stretches of the Riverland for campers and RVs.

Named after Charles Kingston and originally called 'Kingston', the town was part of the new village settlement scheme started in the 1890s. The tag 'on Murray' was added to distinguish it from the town of Kingston on the Limestone Coast. One of Australia's great explorers, Captain Charles Sturt, landed near the town on his river expedition of 1830. A lookout off **Kingston Bridge** marks the spot and offers fabulous scenic views. History buffs can learn more by booking a time to view the museum in the beautiful **Kingston on Murray Hall**.

One of the area's biggest attractions, **Banrock Station Wine and Wetlands Centre** combines internationally recognised wetlands with an amazing food and wine experience. Join a tour or self-guide through the restored

wetlands to better appreciate these special and important ecosystems.

If you'd like to get on the water, take a leisurely cruise or paddle the backwaters of **Chambers Creek**. Other places to explore include the **Loch Luna** and **Moorook Game Reserves**, which consist of multiple water bodies and a maze of narrow creeks. A public walking trail also runs along the river and lagoons of the Moorook area towards Kingston on Murray.

For simpler pleasures, be sure to grab some fish and chips from the **Moorook General Store** to enjoy on the riverfront!

## LOVEDAY

**Loveday** is most well-known for its **Internment and Prisoner of War camp**, established during World War II.

The internment camp was one of the largest in Australia covering approximately 180 hectares. The site was selected in 1941, benefiting from rail and road connection, irrigated fields and availability of both electricity and telephone communications. The camp was closed at the end of the war, but a few original buildings still remain – they can be viewed by contacting the Berri or Barmera Visitor Information Centres.

Loveday is also home to the popular **Loveday 4x4 Adventure Park** which includes campsites, 4WD tracks, children's playground and its own tavern.



Riverland Wine Centre, Lyrup

## LOXTON

Where the Mallee meets the Murray River, Loxton is the ideal hub for food, wine, events, sport and all-year-round fun.

Loxton has a significant pioneering past, which has been kept alive at **Loxton Historical Village**, open Tuesday to Sunday. Experience the early 1900s at one of their regular Village Alive Days, when blacksmiths, shearers and bakers get to work.

Other attractions include the magnificent old river red gum, the **Tree of Knowledge**, which marks the depth of the 1956 flood, and **The Pines**, a 1909 homestead that houses the family artefacts of Ella Kingdon (tours operate regularly). More history is on offer via the **Storytowns app**, which offers in-depth, podcast-style tours while you self-guide around the town. The main street has some lovely homeware shops and a brilliant bakery renowned across the Riverland.

Enjoy kayaking, walking trails, birdwatching, fishing and more, against a backdrop of towering red gums, abundant wildlife, wetlands, and floodplains. Marvel at sweeping views of the Murray River and Katarapko Island from on top of the **Heaven cliff-top lookout**, next to Habel's Bend Landing.

Loxton is the perfect destination for adventure-driven families. **The Loxton Pioneer Playground** has a giant rope tower and a 15-metre paddle steamer climbing feature (named the PS *Jolly Miller*) and a double flying fox. There's also a riverfront

pump track, and BMX and mountain bike trails as you head along Sophie Edington Drive.

**Loxton Golf Club** is eight kilometres from town. The 18-hole course has been ranked among the Top 10 courses in South Australia and among the Top 40 Australian public access courses. Visitors are welcome, and the club has on-site powered caravan and camp sites.

Check out the delicious menus at the **Loxton Hotel** or **Cucina 837**, serving authentic Italian dishes alongside the award-winning wine from **Salena Estates**. Or try the **Country Bakehouse** bakery for outstanding, scrumptious treats. You can also fill your glass at **Whistling Kite Wines'** cellar door overlooking the river or grab a bottle of Jachmann's cider at the **Loxton Hotel** or **Loxton Club**. If you're after something a little stronger, **Lock 4 Distillery** offers tastings within Salena Estates (think dry and navy-strength gin and unique chilli vodka!).



## LYRUP

**Lyrup** is a small riverside community downstream from Renmark. It's home to the acclaimed **Riverland Wine Centre** which showcases some two dozen regional wine producers and has a range of accommodation options. The riverside RV Park at **SS Ellen Park** is very popular among independent travellers.

**Lyrup Flats** (part of the **Murray River National Park**) comprises 2000 hectares of floodplain on the northern side of the Murray River opposite the township. The park is easily reached by turning off the Sturt Highway between Renmark and Berri. The area provides opportunities to birdwatch, fish, camp, moor a boat or walk along the floodplain. The **Lyrup village settlement** was established in 1894, one of 13 village settlements and the only one surviving.

The site is also home to accommodation (including luxury villas and a converted woolshed) and Australia's first and largest privately-owned sun farm.

## MONASH

Home to one of South Australia's favourite family playgrounds, Monash was proclaimed in 1921 and named after General Sir John Monash.

The renowned **Monash Adventure Park** is a free park that includes a maze, leaning towers and other fun activities, as well as free barbecues and shady trees. Opposite the park you will find a chocolate shop and a community club (the **Monash Club**) for bistro-style dining. Monash is also home to **Top Block Wines** and a general store.

A little out of town is the **Mallee Fowl Restaurant**, set in 24 acres of picturesque bushland with chooks, geese, emus and its own quondong plantation. The eclectic restaurant with its endearing collection of Australiana has earned it the title of best themed restaurant in Australia. It serves



Murray River Trails, Renmark

Aussie country-style meals, complemented by an excellent range of wines, South Australian beers and ciders.

## MORGAN

Morgan has one of the largest riverside open spaces on the Murray, combining excellent river access, family-friendly spaces and rich river heritage.

At its heart is **Morgan's historic wharf precinct** which captures and depicts the early river and rail trading days of the 1870s. Take a self-guided tour of the town's historic icons on the **Morgan Historic Walk** featuring 46 points of interest.

**The Landseer Building** was once a shipping agent's warehouse and is now a museum filled with a remarkable collection of old horse-drawn wagons and a display showing the history and development of the Morgan-to-Whyalla Pipeline.

Grab a brochure from the **Morgan Museum** and go on an adventure trail dedicated to the 'Disappearance of Henry Bryan', a mystery that starts in 1839 on a Murray River expedition led by Governor Gawler and Captain Charles Sturt.

Visit the **Morgan Visitor Information Centre** in the old station master's house on the **Morgan Wharf**. Built in 1878, the wharf stretches along the picturesque riverfront down to the underground powder magazine. Take a stroll to the **Billy Goat Hill Lookout** for the panoramic Murray River view.

Looking for something for the kids? Check out the **Morgan Rail to River Adventure**

**Park** located on the banks of the river. A replica paddle steamer offers the kids hours of enjoyment, with barbecue and shade facilities for the adults; there's also the **Old Wharf Souvenir and Craft Shop** in the railway ticket office.

The town offers plenty of accommodation, including **Morgan Riverside Caravan Park**, holiday homes, the comfortable and affordable **Morgan Colonial Motel**, two magnificent old hotels (don't miss the gorgeous **Terminus Hotel**) and several bed and breakfasts. **River Shack Rentals** manage a range of shacks along the river, ranging from basic to luxurious; and **Cordola Camping** is a popular spot with a stunning location. You'll find takeaway at the **Xross Roads Pantry** and **Marr's Bakery**. Each year sees two major events, **Morgan Lions Christmas Pageant and Fair** and **Morgan Lions Easter markets** on the riverfront.

For an attraction of a different sort, head 20 kilometres southwest to Mt Mary – a dot on a map that's home to a great little hotel! We're talking old stone walls, big burgers, and bags of old-school hospitality. And yep, it's called the **Mt Mary Hotel**...



## OVERLAND CORNER

Famous for its Heritage-listed hotel, 'the OC' (as the locals know it) is a must on your Riverland holiday.

For two centuries, the **Overland Corner** area has been popular with weary travellers. Its expanses of flat land, accessible riverbanks and towering cliffs made it a convenient place for drovers to rest while moving thousands of sheep across South Australia to New South Wales during the first half of the 1800s. Then, to service both road and river traffic, John Chambers (a successful pastoralist) commissioned the building of the **Overland Corner Hotel**.

The hotel was built by William, Henry and George Brand in 1859. In the early 20th century, the hotel also served as the local mail exchange and, due to its historic significance, is now owned by the South Australian National Trust. Today, you can visit the hotel and enjoy local fare and local beer brewed in the Riverland.

**The Heron's Bend Reserve** area is popular for camping and bushwalking. You'll find some excellent examples of red gum, black box and river coolibah trees, plus several species of mallee and acacia, along with cliffs of fossiliferous limestone surmounted by massive oyster beds.

The **National Trust Overland Corner Walking Trail** is a great way to explore the area's European and Indigenous heritage – trail maps are available at the Barmera Visitor Information Centre.

## PARINGA

Paringa was named by the local traditional owners to mean 'big bend in the river'.



Holder Bend Reserve, Waikerie

It lies between the Murray River and local backwaters and is marked by the 96-year-old Paringa Bridge; the bridge features advanced engineering which allows for a section to be lifted twice daily to allow large river traffic to pass through. This is best viewed from **Bert Dix Park**.

The painted **Paringa Silos**, titled 'The River at Renmark', feature silhouettes of local characters with stories of Renmark and Paringa within the profiles.

Visit the **Renmark Paringa Community Museum**, which displays small and large stationary engines, old farm machinery, tractors and static displays. The displays are always evolving and families are encouraged to interact with them. For historic and rustic treasures you can buy, stop in and browse through the collection at **Cammies Antiques**.

The town centre offers the **Paringa Hotel Motel**, a bakery, an IGA general store and accommodation including houseboats, Paringa Caravan Park, a range of self-contained options (try **Mundic Waterfront Cottages**) and **PS Julie Fay B&B** (in nearby Murtho). The jewel in the crown is the multi-award winning **The Frames Luxury Accommodation** – three super-luxurious, self-contained retreats, offered with bespoke experiences including sunset cruises and food safaris.

**Canoe the Riverland** is based in Murtho. You can join a guided kayak tour or guided dinghy tours through the Murray River backwaters. Houseboat fleets include **River Murray**

**Houseboats, Riverfun Houseboats and Houseboat Heaven**.

From Paringa, take Murtho Road to **Headings Cliff Lookout**, where you can admire stunning river views and golden limestone cliffs. After stopping at Headings Cliff, the **Wilkadene Woolshed Brewery** is a popular riverside venue for locals and visitors alike. Sample their huge range of award-winning craft beer, coffee stout and hard lemonade.

## PARUNA

Paruna is an Aboriginal word meaning 'stopping place'. The town is located midway between Loxton and Pinnaroo on the Browns Well Highway and was proclaimed in 1914.

Some 50 residents are served by the **Brown's Well Tavern** which plays host to the likes of shearing competitions and a menu loaded with country pub favourites! Make sure you say hello to Blue, host of one of the friendliest pubs in the region.

The **Paruna Caravan Park** is a pleasant and convenient retreat, popular with travellers.

## RENMARK

The riverfront comes alive in Renmark!

**Renmark** was named after an Aboriginal word meaning 'red mud'. It lies on a sweeping river bend and has one of the most beautiful and accessible riverfronts on the river, with an abundance of wetlands and backwaters

upstream. It was the first irrigation settlement in Australia.

The town is a popular destination for houseboat holiday makers and RV travellers seeking a diverse landscape and long stretches of river frontage. It's big for watersports, including water skiing, wakeboarding, tubing and kneeboarding. Bring your own boat and equipment or hire from local hire company, **Riverland Boat Hire**.

The town is home to **Renmark River Cruises**, one of the region's most acclaimed and popular tour companies – choose from six different tour options. It's also the starting point for the award-winning **Murray River Trails**; with three tour packages to choose from, they help visitors discover the magic of the river.

Align your visit with a scheduled steaming of the historic paddle steamer, **PS Industry** or unearth Renmark's history at the Canadian-born Chaffey brothers' original home, **Olivewood Estate**. The brothers were instrumental in establishing Renmark as the first irrigation settlement in Australia.

'**Possum Parade**' is when the possums emerge at dusk from the riverfront palms – always popular with families! The acclaimed **Chaffey Theatre** arts centre regularly has performances and shows.

Renmark is a terrific destination for lovers of food and drink. Diners can choose from pub and club options, cafés and restaurants. Popular favourites include the **Hotel Renmark**, **Renmark Club** and **Ashley's Restaurant**.

**Warburton's Butchers** is super-popular with caravanners, campers and barbecue lovers!

**Rustons**, originally famous for its rose gardens, is now home to a vodka and gin distillery. **Twenty Third Street Distillery** is a must visit, offering tastings, a contemporary food menu, gin blending and cocktail mixing masterclasses. **St Agnes Distillery** (located at Angove's) has been making premium brandy and whisky since 1910. All three offer tours.

Wine lovers will be impressed by award-winning wines at both **Angove's** and **Mallee Estates Wines**. Also located at Mallee Estate Wines is **Eleni's**, a traditional Greek cuisine restaurant serving up authentic family recipes.

Visit local roasters **Arrosto Coffee**, in the old Renmark fire station. It has a long list of awards thanks to their sell-out coffee blends and cold-drip speciality. The **Renmark Patisserie** is the place for cakes and bakes. **The Visitor Centre** stocks an extensive range of local farm gate produce, perfect to nibble on or take home as a gift. You can come face to face with the Murray River's most famous resident on a tour of **Parker's Cod Farm**.

**Riverland Sunfresh** does awesome groceries (and fresh pizza!). And finally, don't leave Renmark without visiting **Almondco Almond Hut** and stocking up on fresh almonds and almond base products not seen elsewhere in the Riverland.

**Big4 Renmark Riverfront** and **Riverbend Caravan Park** and **Plush's Bend** riverside RV park have a range of accommodation options. The town also offers apartments, houseboat hire as well as hotel, motel and self-contained options.

Renmark hosts a range of events throughout the year including **Dinghy Racing**, **Renmark Rocks On**, **Riverland Rose and Garden Festival**, **Winter Glow** and **Riverfront Markets**.



## WAIKERIE

The name Waikerie is derived from 'wei kari', meaning 'many wings' in the local Aboriginal people's language. It refers to the giant rain moths, emerging after heavy rain.

Waikerie is known for its iconic citrus industry, magnificent artscapes, birdwatching, golfing and of course a beautiful stretch of the Murray River – a perfect base for your Riverland adventure.

The town is home to one of the longest stretches of accessible riverbank and the width of the river makes it popular for water sports and fishing and is excellent for

houseboats. The main riverfront reserve has beautiful lawns with barbecue facilities, shelters, shady trees, swimming jetty and **Nature Play Park**. There's also a pump track, sensory track, amphitheatre and walking path the length of the riverfront. Check the event calendar for the regular riverfront markets.

For an indulgent river experience, cruise the Murray with **Rivergum Cruises**, taking in views of the 30-metre limestone cliffs. Lunch cruises stop at destinations like Banrock Station and Overland Corner Hotel. You can also hire kayaks from **Woody's Variety Store** and explore the river and Waikerie's backwaters and lagoons. The two-kilometre **Rotary Cliff Top Walk** offers spectacular views. If you're after something for the kids, the Waikerie **Water and Nature Play Park** by the riverfront features a climbing wall, 40-metre double flying fox, six water play areas, a six-metre-high teepee and a wheelchair-friendly merry-go-round; the Lion's undercover playground is located next door. And if everyone fancies a free trip across the water, don't forget the 24-hour ferry!

Waikerie is a home of the Riverland's arts, including the famous **Waikerie Silo Art**, the **Rain Moth Gallery** and **Riverglen View Art** glass studio. Public artworks around town celebrate the rain moth; look out also for a giant yabby and regent parrot on the silos, as well as a giant Murray cod. You can follow **Waikerie Art Tour** via the downloadable **Storytowns app**.

Waikerie has a long and proud history and three museums share the town's stories with extensive displays: **Waikerie RSL War Museum**; **Waikerie and Districts Machinery Preservation Society Museum**; and **National Trust Doris Odgers Reserve**.

The **Waikerie Golf & Country Club** has a long and undulating course; rev-heads will enjoy the adrenaline rush that comes with visiting local motorsport events like the Riverland 300 or the **Waikerie Sunline Speedway**.

Famous for its thriving citrus industry, Waikerie is a fruit-lover's haven. A stop at the **Nippy's** factory is essential to try the best orange juice there is (freshly squeezed while you wait); they also sell flavoured milk. Foodies and home cooks love **Illalangi Gourmet Foods**; owner Keryn creates her own award-winning products and offers grazing boxes for your Riverland picnic.

To eat like the locals, pick up award-winning sausages, barbecue meats and produce from iconic **Rollbusch Quality Meats**, breads from the bakery and enjoy your feast in the sunshine at one of the free riverfront barbecues.

For a traditional pub-style feed, head to the **Waikerie Hotel** or the **Waikerie Club**.

**Hart Lagoon** and **Gluepot Reserve** are both famous with birdwatchers. Gluepot is internationally recognised and home to some 200 species of bird; it also has bush camping and walking trails.



## WINKIE

The small, welcoming town of Winkie is in grape-growing country south of Glossop.

Winkie provides access to the **Murray River National Park (Katarapko)**, a popular recreation area catering for camping, fishing, walking and birdwatching, as well as canoeing and kayaking.

'The Kat', as it's known to locals, comprises 9150 hectares of tree-covered floodplains and wetlands. It is alive with bird species and an important habitat for native fish. **Katarapko Creek** is a significant creek that flows through the park and provides great canoe adventuring. **The Ngak Indau walking trail** is ideal for viewing wetland birdlife.

Katarapko is divided into three: Lock 4 section, Eckert's Creek section and Katarapko Creek section. Each has a separate entrance. **Katfish Reach** is a community environmental rehabilitation project that encompasses the Katarapko and Eckert Creek area. The area has been identified as a priority floodplain for environmental flows, and for broad-scale rehabilitation works for native fish.

## WUNKAR

The small town of Wunkar is located 27 kilometres west of Loxton and was originally a station. The town was surveyed in 1926.

Why go to Wunkar? Well, it's home to a very cool little pub called the **Wunkar Golden Grain Tavern**. As well as a warm welcome, you'll find an awesome pub menu that loves to mix it up. The pub is especially popular for its live music and Indian curries!

### WINE COUNTRY

The Riverland is Australia's most expansive, diverse and experimental **wine region** filled with surprises, varieties and renegade producers writing an exciting new chapter in Australian wine. Visit a cellar door or top up for every journey.

See advertisement pages 18 & 19

**Almondco Almond Hut** is home to Australia's premium quality range with over 80 different products, including tongue-tingling flavoured almonds, tasty natural muesli, chocolate-coated almonds, delicious almond paste for your very own DIY almond milk smoothies, and much more.



Ph: (08) 8586 8840  
19895 Sturt Highway, Renmark  
E: [almondhut@almondco.com.au](mailto:almondhut@almondco.com.au)

OPEN  
Monday–Thursday  
8:30am–4:30pm  
Friday  
8am–4pm

SHOP ONLINE  
[shop.almondco.com.au](http://shop.almondco.com.au)

GIFT PACKS AVAILABLE



# LOTSAPOTS GARDEN CENTRE

## THE HOME OF KEV'S QUIRKY CREATIONS

Pots, plants, gift shop and handmade, local rustic metal art.

Specialising in unique but cheap pots and plants with a range of the rare and unusual.

17 RENMARK AVE, RENMARK | 0428 951 399 | EMAIL: [LOTSAPOTSRENMARK@BIGPOND.COM](mailto:LOTSAPOTSRENMARK@BIGPOND.COM) | [LOTSAPOTSGARDENCENTRE](https://www.facebook.com/LOTSAPOTSGARDENCENTRE) | [KEVQUIRKYCREATIONS](https://www.instagram.com/KEVQUIRKYCREATIONS)



### WAIKERIE LIBRARY & VISITOR CENTRE

Call into the Waikerie Library & Visitor Centre to uncover Waikerie's unique attractions. Our friendly staff can provide ideas, advice, brochures, maps, and souvenirs to make your visit memorable. Located at the top of the main street, this is the place to go to speak to a local and discover Waikerie's hidden gems.

1a Strangman Rd, Waikerie  
Ph: (08) 8541 0720  
E: [requests@waikerie.com](mailto:requests@waikerie.com)  
[www.waikerie.com](http://www.waikerie.com)  
@waikeriesa

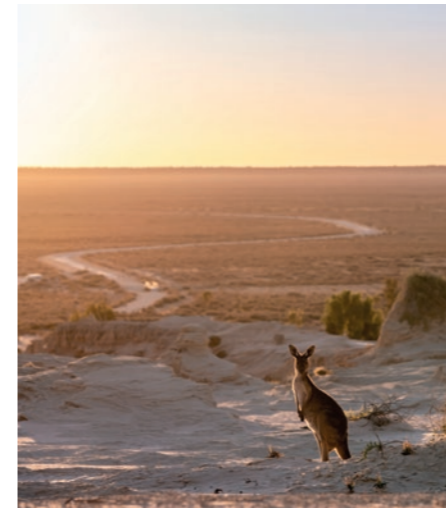


# OUR NEIGHBOURS

KEEP THE GOOD TIMES FLOWING!



Murray River, Murray Bridge



Mungo National Park



River Murray International Dark Sky Reserve



Monarto Safari Park



## Mildura, Wentworth & Surrounds

Mildura is a vibrant city located in the northwest of Victoria on the border of New South Wales. It offers great food, wine, arts, culture and a wide range of accommodation. While Mildura thrives as its own destination, it also serves as the perfect gateway to iconic natural wonders that bring together red earth and mighty rivers, national parks and a cultural heritage more than 45,000 years in the making. Just 30 minutes to the north-west of Mildura is the township of Wentworth, home to the spectacular junction of the Murray and Darling Rivers and a charming town centre brimming with history, attractions and a quirky arts scene. Wentworth is also home to the breathtaking Perry Sandhills

– in places up to 12 metres high and spanning 400 acres – a great day of free entertainment for the family.



## Murray River, Lakes & Coorong

Enjoy more of the mighty Murray River's natural splendour and wildlife! This diverse, family-friendly region offers houseboat holidays, water sports, immersive scenic tours, cycling and walking trails, four-wheel driving, cruises, paddle steamer history and a range of annual events.

Australia's greatest waterway turns south from Morgan and ends at the Murray Mouth near Goolwa.

Our region's waterway begins near Swan Reach, a stretch of river boasting some of the

river's widest expanses and most spectacular ochre cliff faces. It's also home to the River Murray International Dark Sky Reserve.

Murray Bridge and Mannum are the region's two largest and most popular towns with riverfront recreation areas with restaurants. The new Bridgeport Hotel in Murray Bridge makes for a great base and is close to key attractions including Monarto Safari Park and The Bend Motorsport Park. Mannum is home to a huge fleet of houseboats as well as the Murray River Princess and Proud Mary cruise operations and a swag of river history.

Immerse in the culture, history and adventure waiting amongst the diverse environments of South Australia's Mallee, Murray Mouth and Coorong National Park, or sip your way through the award-winning Langhorne Creek Wine Region.

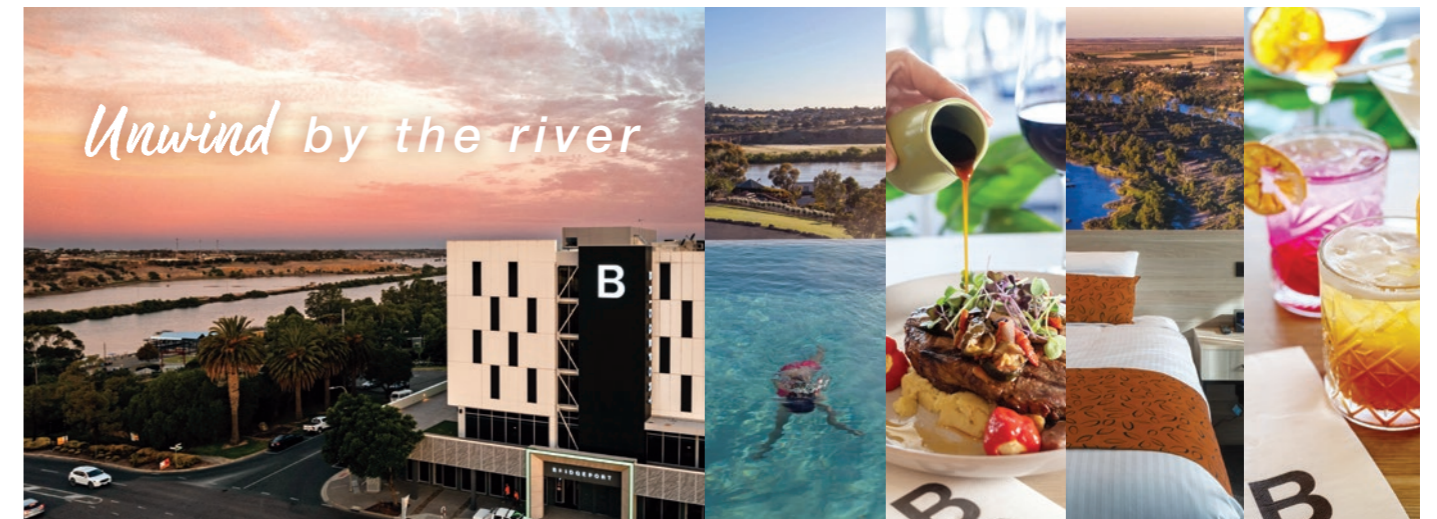


## Join us at the Swanny

Showcasing uninterrupted, 180-degree panoramic views of the mighty Murray River – the Swan Reach Hotel offers the ultimate in country hospitality. Open seven days a week, pop in and soak up the traditional warm, friendly pub atmosphere.

1 Hasse Hill Road, Swan Reach P: (08) 8570 2003 E: swanreachhotel@bigpond.com  
W: swanreachhotel.com f Swan Reach Hotel

SWAN REACH HOTEL  
Murray River, SA



bridgeporthotel.com.au P: [08] 8532 2002  
2 Bridge St, Murray Bridge, South Australia



Winner of the 2022 AHA National Overall Hotel of the Year – Regional



# EVENTS



Markets



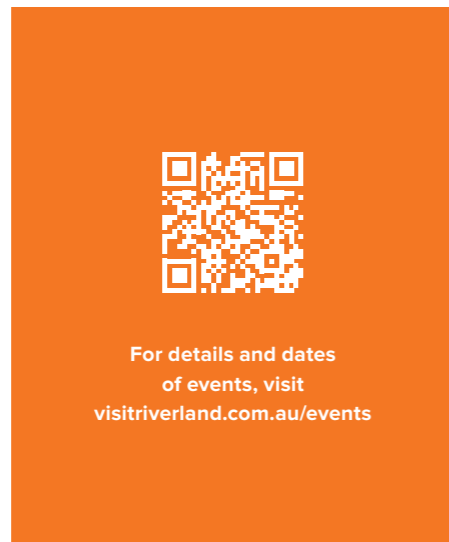
Riverland Dinghy Derby & Dash 4 Cash



SA Carp Frenzy



True Grit



Loveday 400 Off-Road Race



Riverland Field Days



Riverland Rose and Garden Festival



Loxton Lights Festival

# TOP TRAVEL TIPS

## Plan ahead

Allow as much time as possible to explore the Riverland – and book your accommodation in advance!

## Leave fruit and veggies at home

The Riverland is a fruit fly free zone and we want to keep it that way! To find updates on fruit fly restrictions head to [fruitfly.sa.gov.au](http://fruitfly.sa.gov.au) or call the hotline on 1300 666 010.

## Watch for animals on the road

Animals can come out of nowhere! Keep your eyes peeled, especially after dusk or before dawn – apply brakes gently, don't swerve as this can be dangerous.

## Water safety

Water safety is paramount in and around the Murray River, its backwaters and Lake Bonney. Please understand and be aware of the dangers. It is also strongly recommended to wear personal flotation devices.

## Minimise your environmental impact

Ecosystems are delicate so please be environmentally thoughtful and responsible! Keeping waterways clean is important to us all, so discharge your waste appropriately. Don't leave rubbish behind and ensure no trace of your visit remains when you depart. And never remove plants or animals.

## Fire danger

Fire season generally runs from 15 November to 15 April, when there are strict conditions on lighting fires. On Total Fire Ban Days all fires are banned, including campfires. On days of high-fire danger know your risk and have a plan to stay safe. Download the Country Fire Service (CFS) App or use the CFS Facebook page to stay informed. Observe daily weather forecasts and Fire Danger Ratings and listen for warning messages from the CFS on local radio stations. Bushfire safety information is available by contacting the Bushfire Information Hotline on 1300 362 361 (TTY 13 36 77) or visit [cfs.sa.gov.au](http://cfs.sa.gov.au)

## Keep that carp

European carp are a common and invasive species in the river and cannot be thrown back in once caught (or a fine will apply). Significant works are being undertaken to manage carp in the river and regenerate our native species of fish for us all to enjoy. If you are keen on carp fishing, the SA Carp Frenzy held on Lake Bonney might be a great reason to visit!

## Don't walk amongst the vines

Soil borne pests and diseases are easily transferred by shoes and an outbreak could seriously damage the Riverland's wine industry. If you are joining a vineyard tour, please follow your guide's instructions closely. If you are not on an organised tour, please don't walk amongst our vines.

The 2024 Riverland Visitor Guide is proudly produced by Destination Riverland.

All information contained in this publication is correct at the time of printing October 2023. All advertisements are accepted on the basis that their contents are true and accurate and that they are in no way misleading or otherwise contrary to the Trade Practices Act 1974, or the Fair Trade Act (SA). Destination Riverland and HWR Media do not accept any liability to any person claiming they have been misled or deceived by any material produced herein. Copyright Destination Riverland 2023.

Images © South Australian Tourism Commission, Adam Bruzzone, Brian J Hatchard, Canoe Adventures Riverland, Cathy Edmonds, CityMag, David Sickerdick, Destination Riverland, Elliot Grafton, Grant Schwartzkopff, Isaac Forman, Italo Vardaro, Jacob Jennings Photography, Janette Fulham, Kate Dinning, Laszlo Bilki, Lewis Potter, Mallee Estate Wines, Mark Burgess, Murray River Trails, Outline Creative Media, Rebecca Willox, Rivergum Cruises, River Hamptons, Riverland Field Days, Roonka River Adventure Park, Ross Menz Image Solutions, Skytech Media, takeus\_withyou, True Grit.

Published by HWR Media  
Phone: (08) 8379 9522  
Email: [hwr@hwrmedia.com.au](mailto:hwr@hwrmedia.com.au)  
[hwrmedia.com.au](http://hwrmedia.com.au)



## Keep the Riverland safe

There are many ways you can do your part to help keep the Riverland safe from fruit fly. When travelling into the region make sure you don't have any fruit or vegetables at risk from fruit fly on board. There are many warning signs and places to safely dispose of restricted fruit and vegetables throughout the Riverland.

Plus there is an abundance of amazing produce available when you arrive. There's really no need to stock the car with groceries before you come, because you can find it all here.

For more information on guidelines surrounding traveling with fruit and vegetables visit [fruitfly.sa.gov.au/travelling-restrictions](http://fruitfly.sa.gov.au/travelling-restrictions)



# ADVERTISER DIRECTORY

## ACCOMMODATION

<b>Barmera</b>			
Barmera Lakes Resort.....	(08) 8588 2555	48	
Discovery Parks – Lake Bonney	.....discoveryholidayparks.com.au	51	
No 11 Rustic Retreat.....	0429 350 456	58	
<b>Berri</b>			
Berri Hotel.....	(08) 8582 1411	27	
Berri Riverside Holiday Park	.....berriholidaypark.com.au	53	
Gilbert House.....	0408 812 504	48	
River Hamptons.....	riverhamptons.com.au	59	
Riverbush Holiday Cottages.....	riverbush.com.au	56	
<b>Blanchetown</b>			
Roonka Homestead.....	0418 849 054	52	
Roonka River Adventure Park.....	roonka.org.au	59	
<b>Cobdogla</b>			
Rustic Reflections.....	0429 350 456	58	
<b>Loxton</b>			
BIG4 Loxton Riverfront Holiday Park.....	big4.com.au/caravan-parks/sa/riverland/loxton-riverfront-holiday-park	52	
Loxton Courthouse Apartments	.....loxtoncourthouseapartments.com.au	48	
Riverline Cottage and Gardens	.....riverlinecottage.com.au	57	
The River Block.....	theriverblock.com.au	58	
<b>Lyrup</b>			
Pike River Villas.....	pikeriver.com.au	55	
<b>Mannum</b>			
The Murray Princess.....	1300 729 938	10	
<b>Morgan</b>			
Cordola Camping & Recreation	.....cordolacamping.com.au	55	
Morgan Colonial Motel.....	(08) 8540 2277	54	
Morgan Riverside Caravan Park	.....morganriversidecaravanpark.com.au	56	
<b>Murray Bridge</b>			
Bridgeport Hotel.....	bridgeporthotel.com.au	73	
<b>Overland Corner</b>			
Parcoola Retreats.....	parcoolaretreats.com.au	22	
<b>Paringa</b>			
Mundic Waterfront Cottages.....	mundic.com.au	56	
The Frames...theframesluxuryaccommodation.com.au		59	
<b>Renmark</b>			
BIG4 Renmark Riverfront Holiday Park	.....big4renmark.com.au	OBC	
Boats and Bedzzz.....	boatsandbedzzz.com.au	54	
Renmark Holiday Apartments.....	1300 855 563	50	
Renmark Houseboats.....	renmarkhouseboats.com.au	58	
Renmark River Villas.....	boatsandbedzzz.com.au	54	
Riverbend Caravan Park.....	(08) 8595 5131	50	
The Murray River Queen.....	(08) 8541 4411	57	
<b>Waikerie</b>			
Waikerie Holiday Park.....	(08) 8541 2651	52	
Waikerie Hotel Motel Accommodation	.....waikeriehotel.com	57	
<b>Wigley Flat</b>			
Wigley Retreat.....	wigleyretreat.com.au	52	
<b>ATTRACTIONS AND EXPERIENCES</b>			
<b>Barmera</b>			
Barmera Playspace	.....barmeratourism.com.au/places/barmera-playspace	65	
Loveday Internment Collection and Display	.....barmeratourism.com.au	62	
Pioneer Museum.....	berribarmera.sa.gov.au/hof	62	
Rocky's Hall of Fame.....	berribarmera.sa.gov.au/hof	62	
<b>Berri</b>			
Lion Allan Thurmer Recreational Trail	.....berribarmera.sa.gov.au	65	
<b>Blanchetown</b>			
Explore Mid Murray.....	(08) 8540 2643	11	
<b>Cadell</b>			
Explore Mid Murray.....	(08) 8540 2643	11	
<b>Loxton</b>			
Loxton Golf Club.....	loxtongolf.com.au	37	
Loxton Historical Village.....	thevillageloxton.com.au	62	
The Pines Historic House and Garden	.....thepinesloxton.com	62	
<b>Monash</b>			
Monash Adventure Playground	.....berribarmera.sa.gov.au	59	
<b>Morgan</b>			
Explore Mid Murray.....	(08) 8540 2643	11	
<b>Paringa</b>			
Cammies Antiques.....	cammiesantiques.com.au	65	
<b>Renmark</b>			
Murray River Trails.....	0417 533 063	13	
Olivewood Historic Homestead and Museum	.....(08) 8586 6175	62	
Parker's Cod Farm Tours	.....discoverrenmark.com.au/parkers-cod-farm-tours	13	
<b>Waikerie</b>			
Illalangi Gourmet.....	illalangi.com.au	30	
Nippy's.....	nippys.com.au	26	
Rivergum Cruises.....	rivergumcruises.com.au	12	
<b>CONFERENCE AND EVENTS</b>			
<b>Barmera</b>			
Barmera Markets.....	barmeratourism.com.au	65	
<b>FOOD, WINE AND BEVERAGES</b>			
Riverland Wine.....	riverlandwine.com.au	18, 19	
<b>Barmera</b>			
Bassham Wines.....	basshamwines.com	20	
Bonneyview Café.....	0457 236 235	27	
Flavours of the Riverland	.....flavoursoftheriverland.com.au	36	
Rollbusch Quality Meats.....	(08) 8541 4777	38	
The Lakes Café.....	(08) 8588 2000	27	
<b>Berri</b>			
Berri North Meat Store.....	(08) 8582 4885	23	
Big River Golf and Country Club	.....bigrivergolfandcountryclub.com.au	27	
Earth Restaurant.....	earthrestaurant.com.au	30	
River Jacks Café.....	riverjacks.com.au	37	
<b>Blanchetown</b>			
Blanchetown Hotel.....	(08) 8540 5017	34	
Burk Salter Wines.....	burksalterwines.com.au	34	
<b>Cadell</b>			
Spook Hill Wines.....	spookhillwines.com	39	
<b>Glossop</b>			
The Lavender Café.....	0487 145 059	38	
<b>Kingston on Murray</b>			
Banrock Station.....	banrockstation.com.au	20	
<b>Loxton</b>			
Lock 4 Distillery.....	lock4distillery.com.au	26	
Loxton Hotel.....	loxtonhotel.com.au	35	
QuirkeyCots.....	quirkeycots.com.au	36	
Salena Estate.....	salenaestate.com.au	26	
The Country Bakehouse....	countrybakehouse.com.au	20	
The Loxton Club.....	(08) 8584 7353	26	
Whistling Kite Biodynamic Wine	.....whistlingkitewines.com.au	38	
<b>Lyrup</b>			
Riverland Wine Centre.....	riverlandwinecentre.com.au	55	
<b>Morgan</b>			
Marr's Bakery.....	(08) 8540 2005	34	
Terminus Hotel.....	(08) 8540 2006	39	
<b>Murtho</b>			
Woolshed Brewery.....	wilkadene.com.au	1	
<b>Paringa</b>			
Paringa Hotel/Motel.....	(08) 8595 5005	34	
<b>Paruna</b>			
Brown's Well Tavern & The Paruna General Store	.....0439 761 904	36	
<b>Renmark</b>			
Almondco.....	almondco.com.au	71	
Angove Family Winemakers.....	angove.com.au	33	
Arrosto Coffee.....	arrostocoffee.com.au	38	
Eleni's at Mallee Estate.....	malleeestate.com.au	IFC	
Hotel Renmark.....	hotelrenmark.com.au	30	
Renmark Club.....	(08) 8586 6611	26	
Riverland Charcoal Chicken.....	0416 860 148	22	
Riverland Sunfresh.....	(08) 8586 4566	22	
Rustons Distillery.....	rustons.com.au	23	
St Agnes Distillery.....	stagnedistillery.com.au	33	
Twenty Third Street Distillery.....	(08) 8586 8500	29	
<b>Swan Reach</b>			
Swan Reach Hotel.....	swanreachhotel.com	72	
<b>Waikerie</b>			
Illalangi Gourmet.....	illalangi.com.au	30	
Rollbusch Quality Meats.....	(08) 8541 4777	38	
Viewpoint Café.....	(08) 8541 2444	31	
Waikerie Club Inc.....	(08) 8541 2899	39	
Waikerie Hotel Motel.....	waikeriehotel.com	IBC	
<b>GENERAL SERVICES</b>			
Department of Primary Industries and Regions	.....fruitfly.sa.gov.au/travelling-restrictions	75	
<b>Barmera</b>			
BP Barmera – Top Catch.....	0401 042 667	21	
<b>Berri</b>			
Ampol Berri.....		65	
Berri Newsagency.....	(08) 8582 1049	11	
<b>Renmark</b>			
Bluebird Delights & Gift Boxes.....	0408 845 672	65	
Lotsa Pots and Kev's Quirky Creations	.....facebook.com/LotsaPots	71	
<b>INFORMATION AND BOOKINGS</b>			
Visitor Information Centres.....	southaustralia.com	2	
<b>Berri</b>			
Berri Visitor Information Centre.....	(08) 8582 5511	10	
<b>Renmark</b>			
Renmark Visitor Information Centre	.....discoverrenmark.com.au	12	
<b>Waikerie</b>			
Waikerie Library & Visitor Centre.....	(08) 8541 0720	71	
<b>TOURS AND TRANSPORT</b>			
<b>Paringa</b>			
River Murray Houseboats.....	0427 899 102	12	
<b>Renmark</b>			
Murray Marine Centre.....	murraymarine.com.au	10	
Renmark River Cruises.....	renmarkrivercruises.com.au	13	
Riverfun Houseboats.....	(08) 8595 5537	12	
Riverland Boat Hire.....	riverlandboathire.com.au	13	



Our warm country hospitality is what makes us one of the best destinations in the Riverland. With only a walking distance from the Waikerie riverfront and beautiful sights to see around the region, we have accommodation to suit all travellers. Whether you are travelling solo, a couple, family or after a short getaway from the busyness of everyday life, we've got you covered.



### HOTEL & MOTEL ACCOMMODATION 2 McCoy Street, Waikerie

Short walk to the riverfront and centred in town, the Waikerie Hotel Motel is the perfect place to stay while in Waikerie and surrounding towns with dining, bar and function facilities, perfect for any type of getaway.

### FAMILY ROOMS & CABIN ACCOMMODATION 20 Ian Oliver Drive, Waikerie

Situated just off the highway, surrounded by lush green vineyards and just one kilometre from the main hotel in town, our recently purchased offsite motel accommodation is perfect for larger travelling groups and families complete with family rooms and cabins with its own outdoor kitchen and self-sufficient facilities and just a short drive into town to our main hotel's restaurant and bar facilities.



### OSCAR'S BISTRO 2 McCoy Street, Waikerie

Oscar's Bar & Bistro is the perfect destination to wind down, relax and enjoy country hospitality whether you're a local, visitor or just passing through. We pride ourselves on the warm and cosy atmosphere we love to provide our customers and deliver the best service in the Riverland.







# BIG4 RENMARK

Riverfront Holiday Park

Reservations: 1300 664 612  
Corner Sturt Highway  
and Patey Drive, Renmark



Whether you love the freedom of camping, or prefer 'glamping' or great cabin accommodation, you can experience it all at the multi-award winning **BIG4 Renmark Riverfront Holiday Park**.

Book online or call to make your reservation today!  
[big4renmark.com.au](http://big4renmark.com.au)

**BIG4**  
HOLIDAY PARKS